

---

## Summary

<b>Production Name</b>	TFPI-2 Rabbit Polyclonal Antibody
<b>Description</b>	Rabbit Polyclonal Antibody
<b>Host</b>	Rabbit
<b>Application</b>	WB,ELISA
<b>Reactivity</b>	Human,Rat,Mouse

## Performance

<b>Conjugation</b>	Unconjugated
<b>Modification</b>	Unmodified
<b>Isotype</b>	IgG
<b>Clonality</b>	Polyclonal
<b>Form</b>	Liquid
<b>Storage</b>	Store at 4°C short term. Aliquot and store at -20°C long term. Avoid freeze/thaw cycles.
<b>Buffer</b>	Liquid in PBS containing 50% glycerol, 0.5% BSA and 0.02% New type preservative N.
<b>Purification</b>	Affinity purification

## Immunogen

<b>Gene Name</b>	TFPI2
<b>Alternative Names</b>	TFPI2; Tissue factor pathway inhibitor 2; TFPI-2; Placental protein 5; PP5
<b>Gene ID</b>	7980.0
<b>SwissProt ID</b>	P48307.The antiserum was produced against synthesized peptide derived from the C-terminal region of human TFPI2. AA range:186-235

## Application

<b>Dilution Ratio</b>	WB 1:500 - 1:2000. ELISA: 1:20000
<b>Molecular Weight</b>	13kD

## Background

---

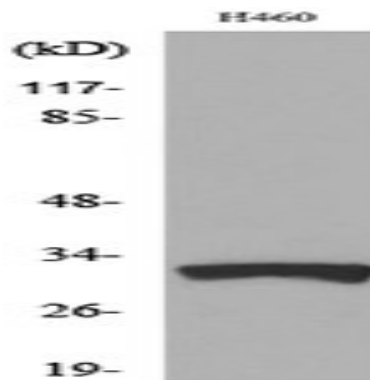
**Product Name: TFPI-2 Rabbit Polyclonal Antibody**  
**Catalog #: APRab18842**



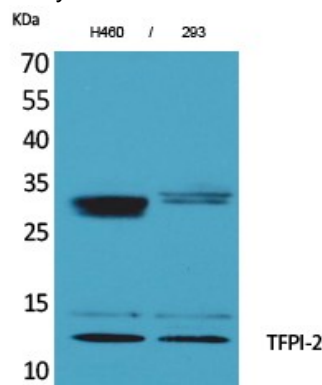
This gene encodes a member of the Kunitz-type serine proteinase inhibitor family. The protein can inhibit a variety of serine proteases including factor VIIa/tissue factor, factor Xa, plasmin, trypsin, chymotrypsin and plasma kallikrein. This gene has been identified as a tumor suppressor gene in several types of cancer. Alternative splicing results in multiple transcript variants. [provided by RefSeq, Aug 2012],domain:This inhibitor contains three inhibitory domains.,function:May play a role in the regulation of plasmin-mediated matrix remodeling. Inhibits trypsin, plasmin, factor VIIa/tissue factor and weakly factor Xa. Has no effect on thrombin.,similarity:Contains 2 BPTI/Kunitz inhibitor domains.,similarity:Contains 3 BPTI/Kunitz inhibitor domains.,tissue specificity:Umbilical vein endothelial cells, liver, placenta, heart, pancreas, and maternal serum at advanced pregnancy.,

**Research Area**

**Image Data**



Western blot analysis of lysate from H460 cells, using TFPI2 Antibody.



Western Blot analysis of H460, 293 cells using TFPI-2 Polyclonal Antibody.. Secondary antibody was diluted at 1:20000

**Note**

For research use only.