
Summary

Production Name	TF Rabbit Polyclonal Antibody
Description	Rabbit Polyclonal Antibody
Host	Rabbit
Application	WB,IHC,ELISA
Reactivity	Human,Rat,Mouse

Performance

Conjugation	Unconjugated
Modification	Unmodified
Isotype	IgG
Clonality	Polyclonal
Form	Liquid
Storage	Store at 4°C short term. Aliquot and store at -20°C long term. Avoid freeze/thaw cycles.
Buffer	Liquid in PBS containing 50% glycerol, 0.5% BSA and 0.02% New type preservative N.
Purification	Affinity purification

Immunogen

Gene Name	F3
Alternative Names	F3; Tissue factor; TF; Coagulation factor III; Thromboplastin; CD142
Gene ID	2152.0
SwissProt ID	P13726.The antiserum was produced against synthesized peptide derived from the Internal region of human F3. AA range:131-180

Application

Dilution Ratio	WB 1:500 - 1:2000. IHC: 1:100-300 ELISA: 1:20000..
Molecular Weight	33kD

Background

Product Name: TF Rabbit Polyclonal Antibody
Catalog #: APRab18809

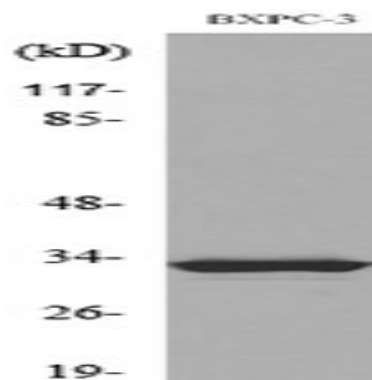


This gene encodes coagulation factor III which is a cell surface glycoprotein. This factor enables cells to initiate the blood coagulation cascades, and it functions as the high-affinity receptor for the coagulation factor VII. The resulting complex provides a catalytic event that is responsible for initiation of the coagulation protease cascades by specific limited proteolysis. Unlike the other cofactors of these protease cascades, which circulate as nonfunctional precursors, this factor is a potent initiator that is fully functional when expressed on cell surfaces. There are 3 distinct domains of this factor: extracellular, transmembrane, and cytoplasmic. This protein is the only one in the coagulation pathway for which a congenital deficiency has not been described. Alternate splicing results in multiple transcript variants.[provided by RefSeq, May 2010],function:Initiates blood coagulation by forming a complex with circulating factor VII or VIIa. The [TF:VIIa] complex activates factors IX or X by specific limited proteolysis. TF plays a role in normal hemostasis by initiating the cell-surface assembly and propagation of the coagulation protease cascade.,induction:TF expression is highly dependent upon cell type. TF can also be induced by the inflammatory mediators interleukin 1 and TNF, as well as by endotoxin, to appear on monocytes and vascular endothelial cells as a component of cellular immune response.,online information:The Singapore human mutation and polymorphism database,online information:Tissue factor entry,similarity:Belongs to the tissue factor family.,

Research Area

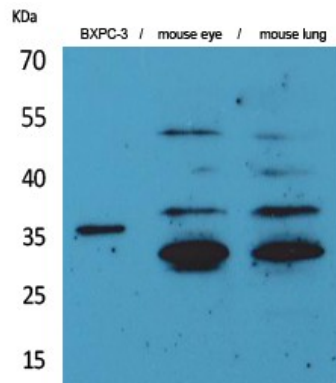
Complement and coagulation cascades;

Image Data

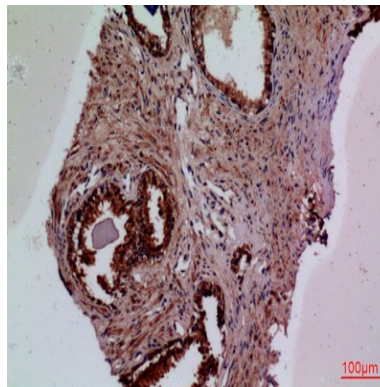


Western blot analysis of lysate from BXPC-3 cells, using F3 Antibody.

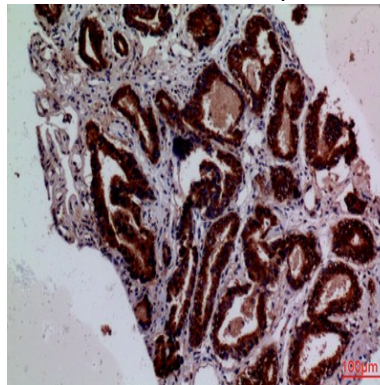
Product Name: TF Rabbit Polyclonal Antibody
Catalog #: APRab18809



Western Blot analysis of BXPC-3, mouse eye, mouse lung cells using TF Polyclonal Antibody.. Secondary antibody was diluted at 1:20000

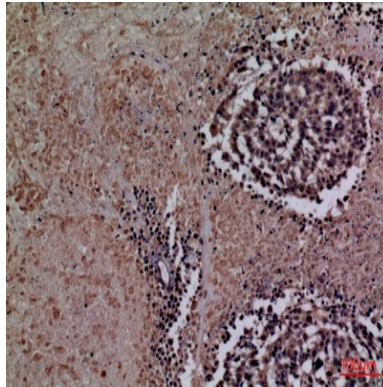


Immunohistochemical analysis of paraffin-embedded human-prostate-cancer, antibody was diluted at 1:100



Immunohistochemical analysis of paraffin-embedded human-prostate-cancer, antibody was diluted at 1:100

Product Name: TF Rabbit Polyclonal Antibody
Catalog #: APRab18809



Immunohistochemical analysis of paraffin-embedded human-lung-cancer, antibody was diluted at 1:100

Note

For research use only.