

Summary

Production Name	TEM7 Rabbit Polyclonal Antibody
Description	Rabbit Polyclonal Antibody
Host	Rabbit
Application	IHC,ELISA
Reactivity	Human,Rat,Mouse

Performance

Conjugation	Unconjugated
Modification	Unmodified
Isotype	IgG
Clonality	Polyclonal
Form	Liquid
Storage	Store at 4°C short term. Aliquot and store at -20°C long term. Avoid freeze/thaw cycles.
Buffer	Liquid in PBS containing 50% glycerol, 0.5% BSA and 0.02% New type preservative N.
Purification	Affinity purification

Immunogen

Gene Name	PLXDC1
Alternative Names	PLXDC1; TEM3; TEM7; Plexin domain-containing protein 1; Tumor endothelial marker 3; Tumor endothelial marker 7
Gene ID	57125.0
SwissProt ID	Q8IUU5.The antiserum was produced against synthesized peptide derived from human PLXDC1. AA range:71-120

Application

Dilution Ratio	IHC 1:100-1:300 ELISA: 1:20000
Molecular Weight	

Background

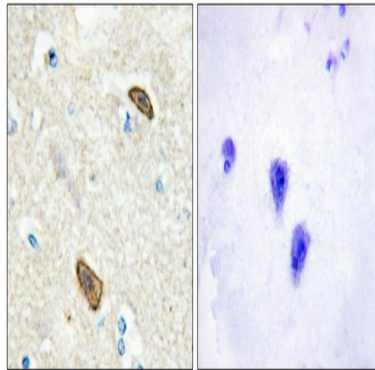
Product Name: TEM7 Rabbit Polyclonal Antibody
Catalog #: APRab18785



PTM:N-glycosylated.,similarity:Belongs to the plexin family.,subunit:May interact with cortactin.,tissue specificity:Detected in endothelial cells from colorectal cancer, and in endothelial cells from primary cancers of the lung, liver, pancreas, breast and brain. Not detectable in endothelial cells from normal tissue.,PTM:N-glycosylated.,similarity:Belongs to the plexin family.,subunit:May interact with cortactin.,tissue specificity:Detected in endothelial cells from colorectal cancer, and in endothelial cells from primary cancers of the lung, liver, pancreas, breast and brain. Not detectable in endothelial cells from normal tissue.,

Research Area

Image Data



Immunohistochemistry analysis of paraffin-embedded human brain, using PLXDC1 Antibody. The picture on the right is blocked with the synthesized peptide.

Note

For research use only.