

**Product Name: TEFF1 Rabbit Polyclonal Antibody**  
**Catalog #: APRab18777**



## Summary

<b>Production Name</b>	TEFF1 Rabbit Polyclonal Antibody
<b>Description</b>	Rabbit Polyclonal Antibody
<b>Host</b>	Rabbit
<b>Application</b>	WB
<b>Reactivity</b>	Human,Rat,Mouse

## Performance

<b>Conjugation</b>	Unconjugated
<b>Modification</b>	Unmodified
<b>Isotype</b>	IgG
<b>Clonality</b>	Polyclonal
<b>Form</b>	Liquid
<b>Storage</b>	Store at 4°C short term. Aliquot and store at -20°C long term. Avoid freeze/thaw cycles.
<b>Buffer</b>	Liquid in PBS containing 50% glycerol, and 0.02% New type preservative N.
<b>Purification</b>	Affinity purification

## Immunogen

<b>Gene Name</b>	TMEFF1 C9orf2
<b>Alternative Names</b>	
<b>Gene ID</b>	100526694.0
<b>SwissProt ID</b>	Q8IYR6.Synthesized peptide derived from part region of human protein

## Application

<b>Dilution Ratio</b>	WB 1:500-2000 ELISA 1:5000-20000
<b>Molecular Weight</b>	41kD

## Background

function:May inhibit NODAL and BMP signaling during neural patterning (By similarity). May be a tumor suppressor in brain cancers.,similarity:Belongs to the tomoregulin family.,similarity:Belongs to the UPF0439 family.,similarity:Contains 1 EGF-like

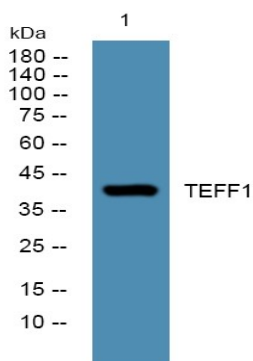
**Product Name: TEFF1 Rabbit Polyclonal Antibody**  
**Catalog #: APRab18777**



domain.,similarity:Contains 2 Kazal-like domains.,subunit:May interact with ST14.,tissue specificity:Expressed in brain.,tissue specificity:Expressed predominantly in brain, and at lower levels in heart, placenta and skeletal muscle. Down-regulated in brain tumors as compared to control brain tissues.,function:May inhibit NODAL and BMP signaling during neural patterning (By similarity). May be a tumor suppressor in brain cancers.,similarity:Belongs to the tomoregulin family.,similarity:Belongs to the UPF0439 family.,similarity:Contains 1 EGF-like domain.,similarity:Contains 2 Kazal-like domains.,subunit:May interact with ST14.,tissue specificity:Expressed in brain.,tissue specificity:Expressed predominantly in brain, and at lower levels in heart, placenta and skeletal muscle. Down-regulated in brain tumors as compared to control brain tissues.,

## Research Area

## Image Data



Western blot analysis of lysates from U2OS cells, primary antibody was diluted at 1:1000, 4°over night

## Note

For research use only.