
Summary

Production Name	TEF Rabbit Polyclonal Antibody
Description	Rabbit Polyclonal Antibody
Host	Rabbit
Application	WB,ELISA
Reactivity	Human,Mouse,Rat

Performance

Conjugation	Unconjugated
Modification	Unmodified
Isotype	IgG
Clonality	Polyclonal
Form	Liquid
Storage	Store at 4°C short term. Aliquot and store at -20°C long term. Avoid freeze/thaw cycles.
Buffer	Liquid in PBS containing 50% glycerol, 0.5% BSA and 0.02% New type preservative N.
Purification	Affinity purification

Immunogen

Gene Name	TEF
Alternative Names	TEF; KIAA1655; Thyrotroph embryonic factor
Gene ID	7008.0
SwissProt ID	Q10587.The antiserum was produced against synthesized peptide derived from human TEF. AA range:211-260

Application

Dilution Ratio	WB 1:500 - 1:2000. ELISA: 1:10000
Molecular Weight	45-55kD

Background

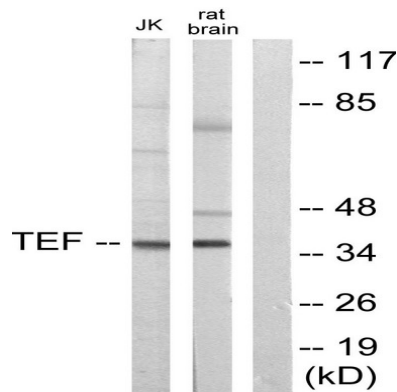
Product Name: TEF Rabbit Polyclonal Antibody
Catalog #: APRab18773



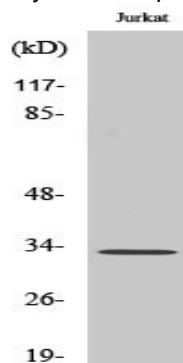
TEF, PAR bZIP transcription factor(TEF) Homo sapiens This gene encodes a member of the PAR (proline and acidic amino acid-rich) subfamily of basic region/leucine zipper (bZIP) transcription factors. It is expressed in a broad range of cells and tissues in adult animals, however, during embryonic development, TEF expression appears to be restricted to the developing anterior pituitary gland, coincident with the appearance of thyroid-stimulating hormone, beta (TSHB). Indeed, TEF can bind to, and transactivate the TSHB promoter. It shows homology (in the functional domains) with other members of the PAR-bZIP subfamily of transcription factors, which include albumin D box-binding protein (DBP), human hepatic leukemia factor (HLF) and chicken vitellogenin gene-binding protein (VBP); VBP is considered the chicken homologue of TEF. Different members of the subfamily can readily form heterodimers, and share DNA-binding, and transcriptional regulatory function: Transcription factor that binds to and transactivates the TSHB promoter. Binds to a minimal DNA-binding sequence 5'-[TC][AG][AG]TTA[TC][AG]-3', induction: Accumulates according to a robust circadian rhythm., similarity: Belongs to the bZIP family., similarity: Belongs to the bZIP family. PAR subfamily., similarity: Contains 1 bZIP domain., subunit: Binds DNA as a homodimer or a heterodimer. Can form a heterodimer with DBP.,

Research Area

Image Data



Western blot analysis of lysates from Jurkat and rat brain cells, using TEF Antibody. The lane on the right is blocked with the synthesized peptide.



Product Name: TEF Rabbit Polyclonal Antibody
Catalog #: APRab18773



Western Blot analysis of various cells using TEF Polyclonal Antibody cells nucleus extracted by Minute TM Cytoplasmic and Nuclear Fractionation kit (SC-003, Inventbiotech, MN, USA) .

Note

For research use only.