
Summary

Production Name	TDE1 Rabbit Polyclonal Antibody
Description	Rabbit Polyclonal Antibody
Host	Rabbit
Application	IF, WB, ELISA
Reactivity	Human, Mouse, Rat

Performance

Conjugation	Unconjugated
Modification	Unmodified
Isotype	IgG
Clonality	Polyclonal
Form	Liquid
Storage	Store at 4°C short term. Aliquot and store at -20°C long term. Avoid freeze/thaw cycles.
Buffer	Liquid in PBS containing 50% glycerol, 0.5% BSA and 0.02% New type preservative N.
Purification	Affinity purification

Immunogen

Gene Name	SERINC3
Alternative Names	SERINC3; DIFF33; TDE1; SBBI99; Serine incorporator 3; Tumor differentially expressed protein 1
Gene ID	10955.0
SwissProt ID	Q13530. The antiserum was produced against synthesized peptide derived from human SERC3. AA range:361-410

Application

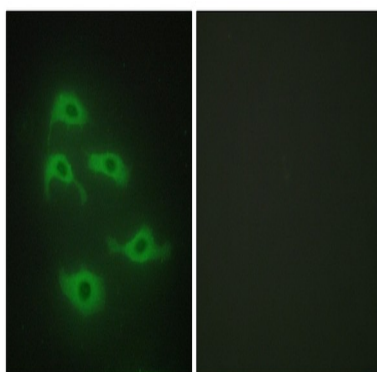
Dilution Ratio	WB 1:500 - 1:2000. IF 1:200 - 1:1000. ELISA: 1:20000. Not yet tested in other applications.
Molecular Weight	52kD

Background

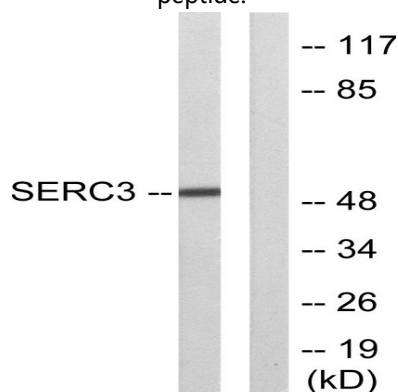
function:May be involved in cellular transformation.,PTM:N-glycosylated.,similarity:Belongs to the TDE1 family.,tissue specificity:Ubiquitous. Expression levels were increased fourfold to tenfold in lung tumor tissues compared with normal pulmonary tissues.,function:May be involved in cellular transformation.,PTM:N-glycosylated.,similarity:Belongs to the TDE1 family.,tissue specificity:Ubiquitous. Expression levels were increased fourfold to tenfold in lung tumor tissues compared with normal pulmonary tissues.,

Research Area

Image Data

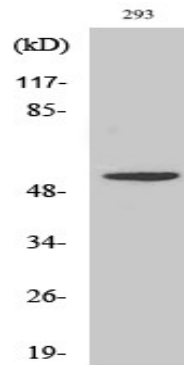


Immunofluorescence analysis of HepG2 cells, using SERC3 Antibody. The picture on the right is blocked with the synthesized peptide.



Western blot analysis of lysates from 293 cells, using SERC3 Antibody. The lane on the right is blocked with the synthesized peptide.

Product Name: TDE1 Rabbit Polyclonal Antibody
Catalog #: APRab18758



Western Blot analysis of various cells using TDE1 Polyclonal Antibody

Note

For research use only.