

**Product Name: TCR  $\beta$  Rabbit Polyclonal Antibody**  
**Catalog #: APRab18753**



---

## Summary

<b>Production Name</b>	TCR $\beta$ Rabbit Polyclonal Antibody
<b>Description</b>	Rabbit Polyclonal Antibody
<b>Host</b>	Rabbit
<b>Application</b>	WB,ELISA
<b>Reactivity</b>	Human,Rat,Mouse

## Performance

<b>Conjugation</b>	Unconjugated
<b>Modification</b>	Unmodified
<b>Isotype</b>	IgG
<b>Clonality</b>	Polyclonal
<b>Form</b>	Liquid
<b>Storage</b>	Store at 4°C short term. Aliquot and store at -20°C long term. Avoid freeze/thaw cycles.
<b>Buffer</b>	Liquid in PBS containing 50% glycerol, 0.5% BSA and 0.02% New type preservative N.
<b>Purification</b>	Affinity purification

## Immunogen

<b>Gene Name</b>	TRBC1
<b>Alternative Names</b>	TRBC1; T-cell receptor beta-1 chain C region
<b>Gene ID</b>	28639.0
<b>SwissProt ID</b>	P01850.The antiserum was produced against synthesized peptide derived from human TCR beta. AA range:66-115

## Application

<b>Dilution Ratio</b>	WB 1:500 - 1:2000. ELISA: 1:10000
<b>Molecular Weight</b>	20kD

## Background

---

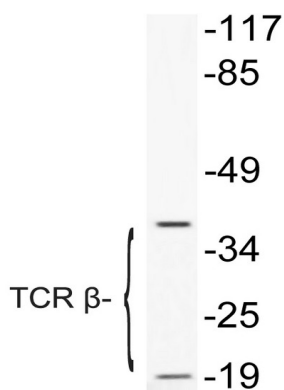
**Product Name: TCR  $\beta$  Rabbit Polyclonal Antibody**  
**Catalog #: APRab18753**



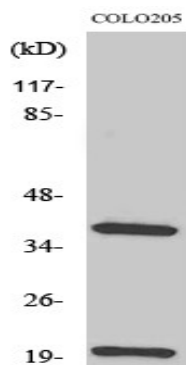
similarity:Contains 1 Ig-like (immunoglobulin-like) domain.,similarity:Contains 1 Ig-like (immunoglobulin-like) domain.,

## Research Area

## Image Data



Western blot analysis of lysate from COLO205 cells treated with Forskolin, using TCR  $\beta$  antibody.



Western Blot analysis of various cells using TCR  $\beta$  Polyclonal Antibody

## Note

For research use only.