
Summary

Production Name	TCEAL1 Rabbit Polyclonal Antibody
Description	Rabbit Polyclonal Antibody
Host	Rabbit
Application	WB,ELISA
Reactivity	Human,Mouse,Rat

Performance

Conjugation	Unconjugated
Modification	Unmodified
Isotype	IgG
Clonality	Polyclonal
Form	Liquid
Storage	Store at 4°C short term. Aliquot and store at -20°C long term. Avoid freeze/thaw cycles.
Buffer	Liquid in PBS containing 50% glycerol, 0.5% BSA and 0.02% New type preservative N.
Purification	Affinity purification

Immunogen

Gene Name	TCEAL1
Alternative Names	TCEAL1; SIIR; Transcription elongation factor A protein-like 1; TCEA-like protein 1; Nuclear phosphoprotein p21/SIIR; Transcription elongation factor S-II protein-like 1
Gene ID	9338.0
SwissProt ID	Q15170.The antiserum was produced against synthesized peptide derived from human TCEAL1. AA range:91-140

Application

Dilution Ratio	WB 1:500 - 1:2000. ELISA: 1:20000..
Molecular Weight	20kD

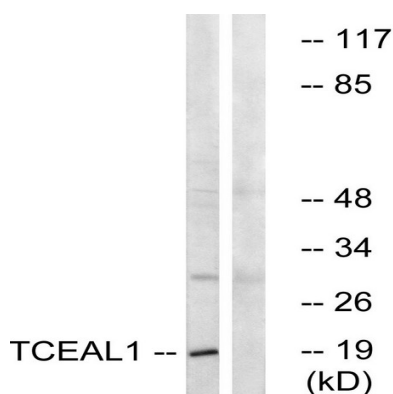
Background

This gene encodes a member of the transcription elongation factor A (SII)-like (TCEAL) gene family. Members of this family may function as nuclear phosphoproteins that modulate transcription in a promoter context-dependent manner. The encoded protein is similar to transcription elongation factor A/transcription factor SII and contains a zinc finger-like motif as well as a sequence related to the transcription factor SII Pol II-binding region. It may exert its effects via protein-protein interactions with other transcriptional regulators rather than via direct binding of DNA. Multiple family members are located on the X chromosome. Alternative splicing results in multiple transcript variants encoding a single isoform.

[provided by RefSeq, Jul 2008],function:May be involved in transcriptional regulation. Modulates various viral and cellular promoters in a promoter context-dependent manner. For example, transcription from the FOS promoter is increased, while Rous sarcoma virus (RSV) long terminal repeat (LTR) promoter activity is repressed. Does not bind DNA directly.,PTM:Phosphorylation of Ser-36 and Ser-37 is critical for transcriptional repression.,similarity:Belongs to the TFS-II family. TFA subfamily.,tissue specificity:Expressed in all tissues examined. Highly expressed in heart, ovary, prostate and skeletal muscle. Moderately expressed in brain, placenta, testis and small intestine. Weakly expressed in lung, liver and spleen. Expressed in several cancer cell lines.,

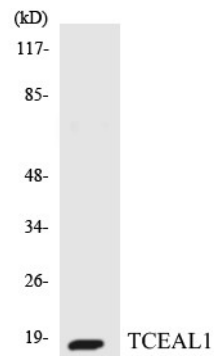
Research Area

Image Data

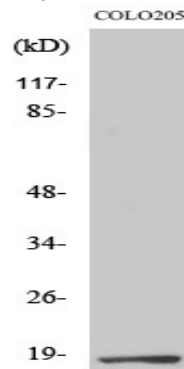


Western blot analysis of lysates from COLO cells, using TCEAL1 Antibody. The lane on the right is blocked with the synthesized peptide.

Product Name: TCEAL1 Rabbit Polyclonal Antibody
Catalog #: APRab18723



Western blot analysis of the lysates from HeLa cells using TCEAL1 antibody.



Western Blot analysis of various cells using TCEAL1 Polyclonal Antibody cells nucleus extracted by Minute TM Cytoplasmic and Nuclear Fractionation kit (SC-003, Inventbiotech, MN, USA) .

Note

For research use only.