

Product Name: TBX22 Rabbit Polyclonal Antibody
Catalog #: APRab18708



Summary

Production Name	TBX22 Rabbit Polyclonal Antibody
Description	Rabbit Polyclonal Antibody
Host	Rabbit
Application	WB
Reactivity	Human,Rat,Mouse

Performance

Conjugation	Unconjugated
Modification	Unmodified
Isotype	IgG
Clonality	Polyclonal
Form	Liquid
Storage	Store at 4°C short term. Aliquot and store at -20°C long term. Avoid freeze/thaw cycles.
Buffer	Liquid in PBS containing 50% glycerol, 0.5% BSA and 0.02% New type preservative N.
Purification	Affinity purification

Immunogen

Gene Name	TBX22
Alternative Names	TBX22; TBOX22; T-box transcription factor TBX22; T-box protein 22
Gene ID	50945.0
SwissProt ID	Q9Y458.The antiserum was produced against synthesized peptide derived from human TBX22. AA range:1-50

Application

Dilution Ratio	WB 1:500-1:2000. ELISA: 1:20000.
Molecular Weight	58kD

Background

T-box 22(TBX22) Homo sapiens This gene is a member of a phylogenetically conserved family of genes that share a

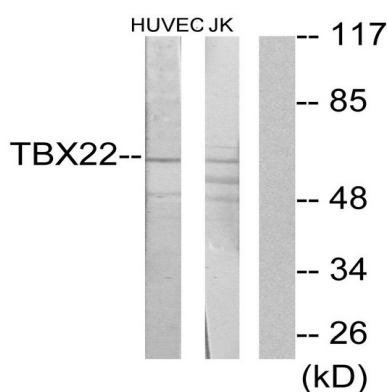
Product Name: TBX22 Rabbit Polyclonal Antibody
Catalog #: APRab18708



common DNA-binding domain, the T-box. T-box genes encode transcription factors involved in the regulation of developmental processes. Mutations in this gene have been associated with the inherited X-linked disorder, Cleft palate with ankyloglossia, and it is believed to play a major role in human palatogenesis. Alternatively spliced transcript variants encoding different isoforms have been found for this gene. [provided by RefSeq, Jul 2008],disease:Defects in TBX22 are the cause of X-linked cleft palate with ankyloglossia (CPX) [MIM:303400],function:Probable transcriptional regulator involved in developmental processes. This is major determinant crucial to palatogenesis.,similarity:Contains 1 T-box DNA-binding domain.,tissue specificity:Seems to be expressed at a low level.,

Research Area

Image Data



Western blot analysis of lysates from Jurkat and HUVEC cells, using TBX22 Antibody. The lane on the right is blocked with the synthesized peptide.

Note

For research use only.