
Summary

Production Name	TBPL2 Rabbit Polyclonal Antibody
Description	Rabbit Polyclonal Antibody
Host	Rabbit
Application	WB,IHC,
Reactivity	Human,Rat,Mouse

Performance

Conjugation	Unconjugated
Modification	Unmodified
Isotype	IgG
Clonality	Polyclonal
Form	Liquid
Storage	Store at 4°C short term. Aliquot and store at -20°C long term. Avoid freeze/thaw cycles.
Buffer	Liquid in PBS containing 50% glycerol, 0.5% BSA and 0.02% New type preservative N.
Purification	Affinity purification

Immunogen

Gene Name	TBPL2
Alternative Names	TBPL2; TBP2; TRF3; TATA box-binding protein-like protein 2; TBP-like protein 2; TATA box-binding protein-related factor 3; TBP-related factor 3
Gene ID	387332.0
SwissProt ID	Q6SJ96.The antiserum was produced against synthesized peptide derived from human TBPL2. AA range:81-130

Application

Dilution Ratio	WB 1:500 - 1:2000. IHC 1:100 - 1:300. ELISA: 1:5000..
Molecular Weight	41kD

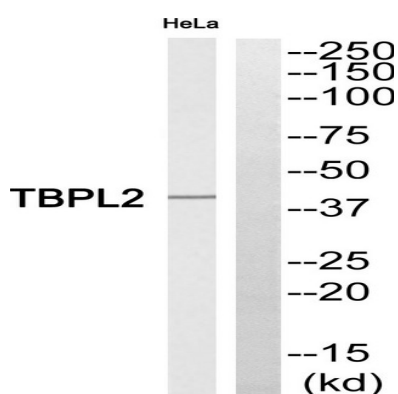
Background

function:Transcription factor required in complex with TAF3 for the differentiation of myoblasts into myocytes. The complex replaces TFIID at specific promoters at an early stage in the differentiation process.,similarity:Belongs to the TBP family.,subcellular location:Present in the cytoplasm during cytokinesis.,subunit:Interacts with TAF3.,tissue specificity:Ubiquitously expressed in all tissues examined with highest levels in heart, lung, ovary, spleen and testes.,function:Transcription factor required in complex with TAF3 for the differentiation of myoblasts into myocytes. The complex replaces TFIID at specific promoters at an early stage in the differentiation process.,similarity:Belongs to the TBP family.,subcellular location:Present in the cytoplasm during cytokinesis.,subunit:Interacts with TAF3.,tissue specificity:Ubiquitously expressed in all tissues examined with highest levels in heart, lung, ovary, spleen and testes.,

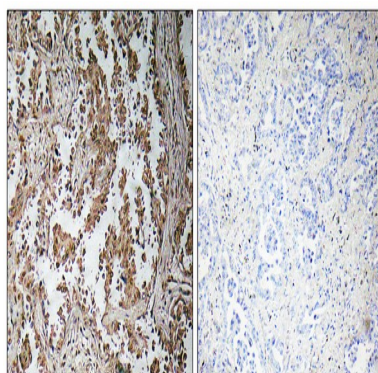
Research Area

Basal transcription factors;Huntington's disease;

Image Data

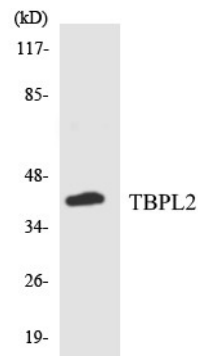


Western blot analysis of TBPL2 Antibody. The lane on the right is blocked with the TBPL2 peptide.

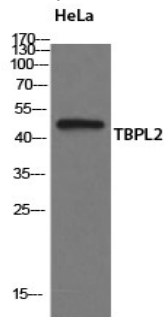


Immunohistochemistry analysis of paraffin-embedded human lung carcinoma, using TBPL2 Antibody. The lane on the right is blocked with the TBPL2 peptide.

Product Name: TBPL2 Rabbit Polyclonal Antibody
Catalog #: APRab18695



Western blot analysis of the lysates from COLO205 cells using TBPL2 antibody.



Western Blot analysis of HeLa cells using TBPL2 Polyclonal Antibody

Note

For research use only.