

Product Name: TBL2 Rabbit Polyclonal Antibody
Catalog #: APRab18692



Summary

Production Name	TBL2 Rabbit Polyclonal Antibody
Description	Rabbit Polyclonal Antibody
Host	Rabbit
Application	WB
Reactivity	Human,Rat,Mouse

Performance

Conjugation	Unconjugated
Modification	Unmodified
Isotype	IgG
Clonality	Polyclonal
Form	Liquid
Storage	Store at 4°C short term. Aliquot and store at -20°C long term. Avoid freeze/thaw cycles.
Buffer	Liquid in PBS containing 50% glycerol, 0.5% BSA and 0.02% New type preservative N.
Purification	Affinity purification

Immunogen

Gene Name	TBL2
Alternative Names	TBL2; WBSCR13; Transducin beta-like protein 2; WS beta-transducin repeats protein; WS-betaTRP; Williams-Beuren syndrome chromosomal region 13 protein
Gene ID	26608.0
SwissProt ID	Q9Y4P3.The antiserum was produced against synthesized peptide derived from human TBL2. AA range:381-430

Application

Dilution Ratio	WB 1:500-1:2000. ELISA: 1:5000.
Molecular Weight	50kD

Background

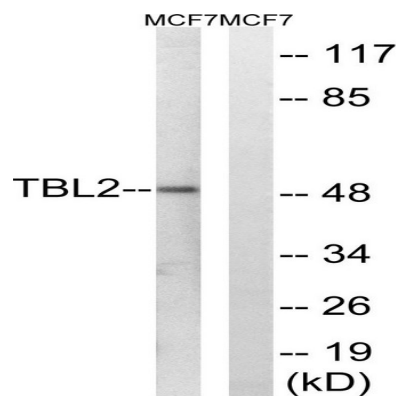
Product Name: TBL2 Rabbit Polyclonal Antibody
Catalog #: APRab18692



This gene encodes a member of the beta-transducin protein family. Most proteins of the beta-transducin family are involved in regulatory functions. This protein is possibly involved in some intracellular signaling pathway. This gene is deleted in Williams-Beuren syndrome, a developmental disorder caused by deletion of multiple genes at 7q11.23. [provided by RefSeq, Jul 2008],disease:Haploinsufficiency of TBL2 may be the cause of certain cardiovascular and musculo-skeletal abnormalities observed in Williams-Beuren syndrome (WBS) [MIM:194050]. WBS is a rare developmental disorder. It is a contiguous gene deletion syndrome involving genes from chromosome band 7q11.23.,PTM:Phosphorylated upon DNA damage, probably by ATM or ATR.,similarity:Contains 7 WD repeats.,

Research Area

Image Data



Western blot analysis of lysates from MCF-7 cells, using TBL2 Antibody. The lane on the right is blocked with the synthesized peptide.

Note

For research use only.