

**Product Name: TBC1D3A/B/C Rabbit Polyclonal Antibody**  
**Catalog #: APRab18676**

---

## Summary

<b>Production Name</b>	TBC1D3A/B/C Rabbit Polyclonal Antibody
<b>Description</b>	Rabbit Polyclonal Antibody
<b>Host</b>	Rabbit
<b>Application</b>	WB,ELISA
<b>Reactivity</b>	Human,Rat,Mouse

## Performance

<b>Conjugation</b>	Unconjugated
<b>Modification</b>	Unmodified
<b>Isotype</b>	IgG
<b>Clonality</b>	Polyclonal
<b>Form</b>	Liquid
<b>Storage</b>	Store at 4°C short term. Aliquot and store at -20°C long term. Avoid freeze/thaw cycles.
<b>Buffer</b>	Liquid in PBS containing 50% glycerol, 0.5% BSA and 0.02% New type preservative N.
<b>Purification</b>	Affinity purification

## Immunogen

<b>Gene Name</b>	TBC1D3
<b>Alternative Names</b>	TBC1D3; PRC17; TBC1D3A; TBC1 domain family member 3; Prostate cancer gene 17 protein; Protein TRE17-alpha; Rab GTPase-activating protein PRC17; TBC1D3B; TBC1D3I; TBC1 domain family member 3B; TBC1D3C; TBC1D3D; TBC1 domain family member 3C
<b>Gene ID</b>	414059/727735/84218/643947/414060/653380/654341/729873
<b>SwissProt ID</b>	Q8IZP1/A6NDS4/Q6IPX1.The antiserum was produced against synthesized peptide derived from human TBC1D3. AA range:481-530

## Application

<b>Dilution Ratio</b>	WB 1:500 - 1:2000. ELISA: 1:20000
-----------------------	-----------------------------------

---

**Product Name: TBC1D3A/B/C Rabbit Polyclonal Antibody**  
**Catalog #: APRab18676**

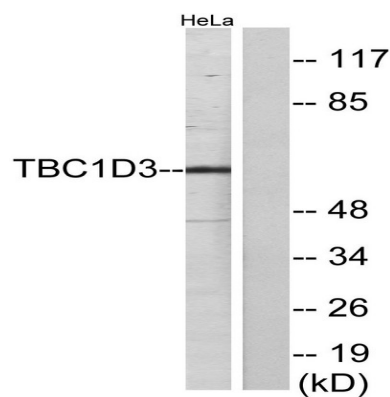
**Molecular Weight**      62kD

## Background

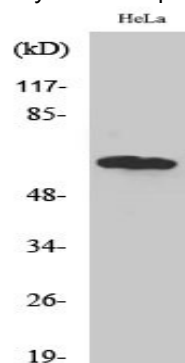
This gene represents one of a cluster of related genes found on chromosome 17. The proteins encoded by this gene family contain a TBC (Tre-2, Bub2p, and Cdc16p) domain and may be involved in GTPase signaling and vesicle trafficking. [provided by RefSeq, Apr 2014],disease:May be involved in forms of prostate cancers.,function:Acts as a GTPase activating protein for RAB5. Does not act on RAB4 or RAB11.,similarity:Contains 1 Rab-GAP TBC domain.,tissue specificity:Expressed in liver, skeletal muscle, kidney, pancreas, spleen, testis, ovary, small intestine and peripheral blood leukocytes. Overexpressed in prostate cancers.,tissue specificity:Expressed in pancreas, thymus and testis.,

## Research Area

## Image Data



Western blot analysis of lysates from HeLa cells, using TBC1D3 Antibody. The lane on the right is blocked with the synthesized peptide.



Western Blot analysis of various cells using TBC1D3A/B/C Polyclonal Antibody

**Product Name: TBC1D3A/B/C Rabbit Polyclonal  
Antibody**  
**Catalog #: APRab18676**

---



**Note**

For research use only.