

Product Name: TAUT Rabbit Polyclonal Antibody
Catalog #: APRab18660



Summary

Production Name	TAUT Rabbit Polyclonal Antibody
Description	Rabbit Polyclonal Antibody
Host	Rabbit
Application	IHC,ELISA
Reactivity	Human,Mouse,Rat

Performance

Conjugation	Unconjugated
Modification	Unmodified
Isotype	IgG
Clonality	Polyclonal
Form	Liquid
Storage	Store at 4°C short term. Aliquot and store at -20°C long term. Avoid freeze/thaw cycles.
Buffer	Liquid in PBS containing 50% glycerol, 0.5% BSA and 0.02% New type preservative N.
Purification	Affinity purification

Immunogen

Gene Name	SLC6A6
Alternative Names	SLC6A6; Sodium- and chloride-dependent taurine transporter; Solute carrier family 6 member 6
Gene ID	6533.0
SwissProt ID	P31641.The antiserum was produced against synthesized peptide derived from human SLC6A6. AA range:561-610

Application

Dilution Ratio	IHC 1:100-1:300 ELISA: 1:40000
Molecular Weight	70kD

Background

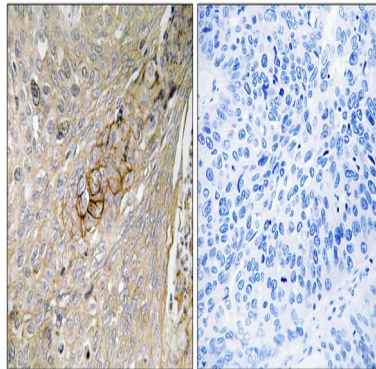
Product Name: TAUT Rabbit Polyclonal Antibody
Catalog #: APRab18660



This gene encodes a multi-pass membrane protein that is a member of a family of sodium and chloride-ion dependent transporters. The encoded protein transports taurine and beta-alanine. There is a pseudogene for this gene on chromosome 21. Alternative splicing results in multiple transcript variants. [provided by RefSeq, May 2013],function:Required for the uptake of taurine.,PTM:Down-regulated upon Ser-322 phosphorylation.,similarity:Belongs to the sodium:neurotransmitter symporter (SNF) family.,

Research Area

Image Data



Immunohistochemistry analysis of paraffin-embedded human lung carcinoma tissue, using SLC6A6 Antibody. The picture on the right is blocked with the synthesized peptide.

Note

For research use only.