

Summary

Production Name	TASK-1 Rabbit Polyclonal Antibody
Description	Rabbit Polyclonal Antibody
Host	Rabbit
Application	WB,ELISA
Reactivity	Human,Mouse,Rat

Performance

Conjugation	Unconjugated
Modification	Unmodified
Isotype	IgG
Clonality	Polyclonal
Form	Liquid
Storage	Store at 4°C short term. Aliquot and store at -20°C long term. Avoid freeze/thaw cycles.
Buffer	Liquid in PBS containing 50% glycerol, 0.5% BSA and 0.02% New type preservative N.
Purification	Affinity purification

Immunogen

Gene Name	KCNK3
Alternative Names	KCNK3; TASK; TASK1; Potassium channel subfamily K member 3; Acid-sensitive potassium channel protein TASK-1; TWIK-related acid-sensitive K(+) channel 1; Two pore potassium channel KT3.1; Two pore K(+) channel KT3.1
Gene ID	3777.0
SwissProt ID	O14649.The antiserum was produced against synthesized peptide derived from human TASK-1. AA range:47-96

Application

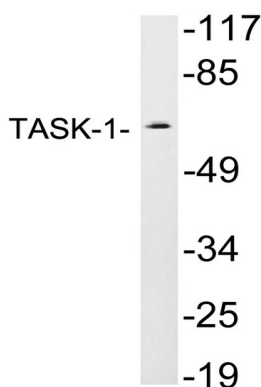
Dilution Ratio	WB 1:500 - 1:2000. ELISA: 1:10000
Molecular Weight	53kD

Background

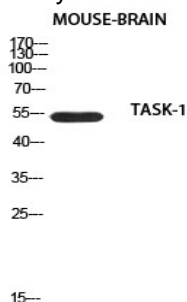
This gene encodes a member of the superfamily of potassium channel proteins that contain two pore-forming P domains. The encoded protein is an outwardly rectifying channel that is sensitive to changes in extracellular pH and is inhibited by extracellular acidification. Also referred to as an acid-sensitive potassium channel, it is activated by the anesthetics halothane and isoflurane. Although three transcripts are detected in northern blots, there is currently no sequence available to confirm transcript variants for this gene. [provided by RefSeq, Aug 2008],function:pH-dependent, voltage-insensitive, background potassium channel protein. Rectification direction results from potassium ion concentration on either side of the membrane. Acts as an outward rectifier when external potassium concentration is low. When external potassium concentration is high, current is inward.,miscellaneous:Inhibited by external acidification. Activated by halothane and isoflurane.,similarity:Belongs to the two pore domain potassium channel (TC 1.A.1.8) family.,tissue specificity:Widespread expression in adult. Strongest expression in pancreas and placenta. Lower expression in brain, lung, prostate, heart, kidney, uterus, small intestine and colon.,

Research Area

Image Data



Western blot analysis of lysates from JAR cells, using TASK-1 antibody.



Product Name: TASK-1 Rabbit Polyclonal Antibody
Catalog #: APRab18651



Western blot analysis of mouse-brain using TASK-1 antibody. Antibody was diluted at 1:500. Secondary antibody was diluted at 1:20000

Note

For research use only.