
Summary

Production Name	TAFI Rabbit Polyclonal Antibody
Description	Rabbit Polyclonal Antibody
Host	Rabbit
Application	WB,ELISA
Reactivity	Human,Rat,Mouse

Performance

Conjugation	Unconjugated
Modification	Unmodified
Isotype	IgG
Clonality	Polyclonal
Form	Liquid
Storage	Store at 4°C short term. Aliquot and store at -20°C long term. Avoid freeze/thaw cycles.
Buffer	Liquid in PBS containing 50% glycerol, 0.5% BSA and 0.02% New type preservative N.
Purification	Affinity purification

Immunogen

Gene Name	CPB2
Alternative Names	CPB2; Carboxypeptidase B2; Carboxypeptidase U; CPU; Plasma carboxypeptidase B; pCPB; Thrombin-activable fibrinolysis inhibitor; TAFI
Gene ID	1361.0
SwissProt ID	Q96IY4.The antiserum was produced against synthesized peptide derived from human CPB2. AA range:321-370

Application

Dilution Ratio	WB 1:500 - 1:2000. ELISA: 1:40000.
Molecular Weight	48kD

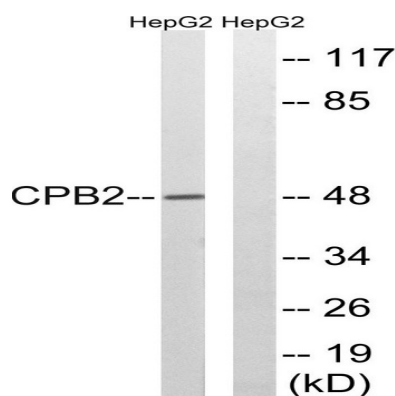
Background

Carboxypeptidases are enzymes that hydrolyze C-terminal peptide bonds. The carboxypeptidase family includes metallo-, serine, and cysteine carboxypeptidases. According to their substrate specificity, these enzymes are referred to as carboxypeptidase A (cleaving aliphatic residues) or carboxypeptidase B (cleaving basic amino residues). The protein encoded by this gene is activated by trypsin and acts on carboxypeptidase B substrates. After thrombin activation, the mature protein downregulates fibrinolysis. Polymorphisms have been described for this gene and its promoter region. Alternate splicing results in multiple transcript variants. [provided by RefSeq, Jun 2013], catalytic activity: Release of C-terminal Arg and Lys from a polypeptide., cofactor: Binds 1 zinc ion per subunit., function: Cleaves C-terminal arginine or lysine residues from biologically active peptides such as kinins or anaphylatoxins in the circulation thereby regulating their activities., similarity: Belongs to the peptidase M14 family., tissue specificity: Plasma; synthesized in the liver.,

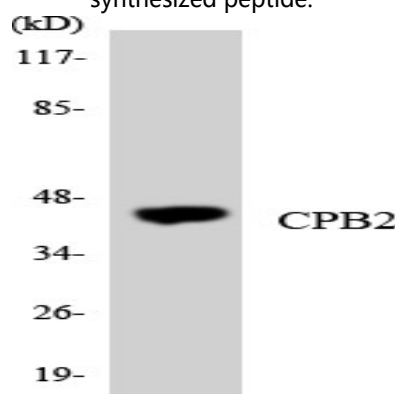
Research Area

Complement and coagulation cascades;

Image Data



Western blot analysis of lysates from HepG2 cells, using CPB2 Antibody. The lane on the right is blocked with the synthesized peptide.



Western blot analysis of the lysates from K562 cells using CPB2 antibody.

Product Name: TAFI Rabbit Polyclonal Antibody
Catalog #: APRab18626



Note

For research use only.