

## Summary

<b>Production Name</b>	TAF II p68 Rabbit Polyclonal Antibody
<b>Description</b>	Rabbit Polyclonal Antibody
<b>Host</b>	Rabbit
<b>Application</b>	IHC, WB, ELISA
<b>Reactivity</b>	Human, Mouse

## Performance

<b>Conjugation</b>	Unconjugated
<b>Modification</b>	Unmodified
<b>Isotype</b>	IgG
<b>Clonality</b>	Polyclonal
<b>Form</b>	Liquid
<b>Storage</b>	Store at 4°C short term. Aliquot and store at -20°C long term. Avoid freeze/thaw cycles.
<b>Buffer</b>	Liquid in PBS containing 50% glycerol, 0.5% BSA and 0.02% New type preservative N.
<b>Purification</b>	Affinity purification

## Immunogen

<b>Gene Name</b>	TAF15
<b>Alternative Names</b>	TAF15; RBP56; TAF2N; TATA-binding protein-associated factor 2N; 68 kDa TATA-binding protein-associated factor; TAF(II)68; TAFII68; RNA-binding protein 56
<b>Gene ID</b>	8148.0
<b>SwissProt ID</b>	Q92804. The antiserum was produced against synthesized peptide derived from human TAF15. AA range: 351-400

## Application

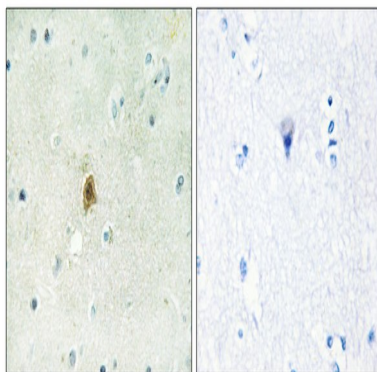
<b>Dilution Ratio</b>	WB 1:500 - 1:2000. IHC 1:100 - 1:300. ELISA: 1:5000..
<b>Molecular Weight</b>	62kD

## Background

This gene encodes a member of the TET family of RNA-binding proteins. The encoded protein plays a role in RNA polymerase II gene transcription as a component of a distinct subset of multi-subunit transcription initiation factor TFIID complexes. Translocations involving this gene play a role in acute leukemia and extraskeletal myxoid chondrosarcoma, and mutations in this gene may play a role in amyotrophic lateral sclerosis. Alternatively spliced transcript variants encoding multiple isoforms have been observed for this gene. [provided by RefSeq, May 2012],disease:A chromosomal aberration involving TAF15/TAF2N is found in a form of extraskeletal myxoid chondrosarcomas (EMC). Translocation t(9;17)(q22;q11) with NR4A3.,function:RNA and ssDNA-binding protein that may play specific roles during transcription initiation at distinct promoters. Can enter the preinitiation complex together with the RNA polymerase II (Pol II),PTM:Arg-206 is dimethylated, probably to asymmetric dimethylarginine.,PTM:Phosphorylated upon DNA damage, probably by ATM or ATR.,similarity:Belongs to the RRM TET family.,similarity:Contains 1 RanBP2-type zinc finger.,similarity:Contains 1 RRM (RNA recognition motif) domain.,subunit:Belongs to the RNA polymerase II (Pol II) transcriptional multiprotein complex, together with the TATA-binding protein (TBP) and other TBP-associated factors (TAF(II)s). Binds SF1.,tissue specificity:Ubiquitous. Observed in all fetal and adult tissues.,

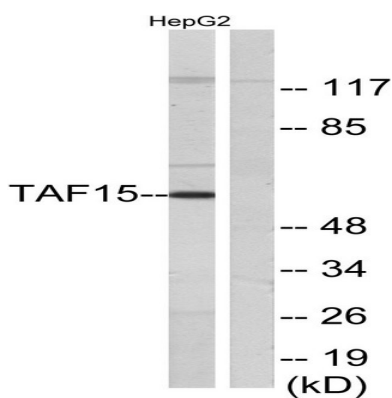
## Research Area

## Image Data

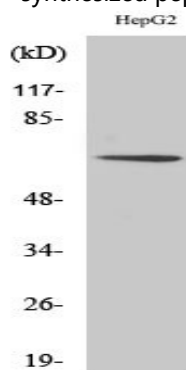


Immunohistochemistry analysis of paraffin-embedded human brain tissue, using TAF15 Antibody. The picture on the right is blocked with the synthesized peptide.

Product Name: TAF II p68 Rabbit Polyclonal Antibody  
Catalog #: APRab18612



Western blot analysis of lysates from HepG2 cells, using TAF15 Antibody. The lane on the right is blocked with the synthesized peptide.



Western Blot analysis of various cells using TAF II p68 Polyclonal Antibody

## Note

For research use only.