

## Summary

<b>Production Name</b>	TAF I p48 Rabbit Polyclonal Antibody
<b>Description</b>	Rabbit Polyclonal Antibody
<b>Host</b>	Rabbit
<b>Application</b>	WB
<b>Reactivity</b>	Human,Rat

## Performance

<b>Conjugation</b>	Unconjugated
<b>Modification</b>	Unmodified
<b>Isotype</b>	IgG
<b>Clonality</b>	Polyclonal
<b>Form</b>	Liquid
<b>Storage</b>	Store at 4°C short term. Aliquot and store at -20°C long term. Avoid freeze/thaw cycles.
<b>Buffer</b>	Liquid in PBS containing 50% glycerol, 0.5% BSA and 0.02% New type preservative N.
<b>Purification</b>	Affinity purification

## Immunogen

<b>Gene Name</b>	TAF1A
<b>Alternative Names</b>	TAF1A; TATA box-binding protein-associated factor RNA polymerase I subunit A; RNA polymerase I-specific TBP-associated factor 48 kDa; TAFI48; TATA box-binding protein-associated factor 1A; TBP-associated factor 1A; Transcription factor SL1;
<b>Gene ID</b>	9015.0
<b>SwissProt ID</b>	Q15573.The antiserum was produced against synthesized peptide derived from human TAF1A. AA range:301-350

## Application

<b>Dilution Ratio</b>	WB 1:500-1:2000. ELISA: 1:20000.
<b>Molecular Weight</b>	53kD

**Product Name: TAF I p48 Rabbit Polyclonal Antibody**  
**Catalog #: APRab18606**

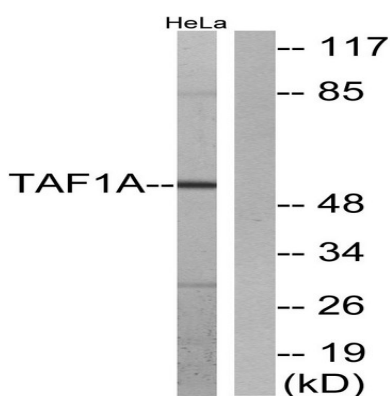


## Background

This gene encodes a subunit of the RNA polymerase I complex, Selectivity Factor I (SLI). The encoded protein is a TATA box-binding protein-associated factor that plays a role in the assembly of the RNA polymerase I preinitiation complex. Alternate splicing results in multiple transcript variants encoding multiple isoforms.[provided by RefSeq, Jan 2011],function:Component of the transcription factor SL1/TIFIB complex involved in the assembly of the PIC (preinitiation complex),.subunit:Component of the transcription factor SL1/TIFIB complex which is composed of TBP and at least TAF1A, TAF1B and TAF1C. In the complex, interacts directly with TBP, TAF1B and TAF1C. Interaction of the SL1/TIFIB subunits with TBP excludes interaction with the transcription factor IID (TFIID) subunits. This mutually exclusive binding directs the formation of promoter and RNA polymerase-selective TBP-TAF complexes.,

## Research Area

## Image Data



Western blot analysis of lysates from HeLa cells, using TAF1A Antibody. The lane on the right is blocked with the synthesized peptide.

## Note

For research use only.