

Product Name: T2R50 Rabbit Polyclonal Antibody
Catalog #: APRab18576



Summary

| | |
|------------------------|----------------------------------|
| Production Name | T2R50 Rabbit Polyclonal Antibody |
| Description | Rabbit Polyclonal Antibody |
| Host | Rabbit |
| Application | WB |
| Reactivity | Human,Rat,Mouse |

Performance

| | |
|---------------------|--|
| Conjugation | Unconjugated |
| Modification | Unmodified |
| Isotype | IgG |
| Clonality | Polyclonal |
| Form | Liquid |
| Storage | Store at 4°C short term. Aliquot and store at -20°C long term. Avoid freeze/thaw cycles. |
| Buffer | Liquid in PBS containing 50% glycerol, and 0.02% New type preservative N. |
| Purification | Affinity purification |

Immunogen

| | |
|--------------------------|--|
| Gene Name | TAS2R50 |
| Alternative Names | |
| Gene ID | 259296.0 |
| SwissProt ID | P59544.Synthesized peptide derived from human protein . at AA range: 160-240 |

Application

| | |
|-------------------------|----------------------------------|
| Dilution Ratio | WB 1:500-2000 ELISA 1:5000-20000 |
| Molecular Weight | 32kD |

Background

TAS2R50 belongs to the large TAS2R receptor family. TAS2Rs are expressed on the surface of taste receptor cells and mediate the perception of bitterness through a G protein-coupled second messenger pathway (Conte et al., 2002 [PubMed])

Product Name: T2R50 Rabbit Polyclonal Antibody
Catalog #: APRab18576

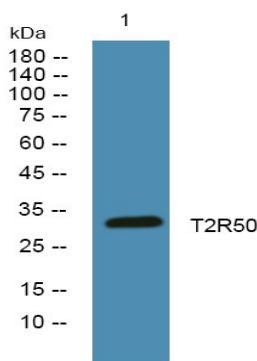


12584440]). See also TAS2R10 (MIM 604791).[supplied by OMIM, Mar 2008],function:Receptor that may play a role in the perception of bitterness and is gustducin-linked. May play a role in sensing the chemical composition of the gastrointestinal content. The activity of this receptor may stimulate alpha gustducin, mediate PLC-beta-2 activation and lead to the gating of TRPM5.,miscellaneous:Most taste cells may be activated by a limited number of bitter compounds; individual taste cells can discriminate among bitter stimuli.,similarity:Belongs to the G-protein coupled receptor T2R family.,tissue specificity:Expressed in subsets of taste receptor cells of the tongue and exclusively in gustducin-positive cells.,

Research Area

Taste transduction;

Image Data



Western blot analysis of lysates from PC12 cells, primary antibody was diluted at 1:1000, 4° over night

Note

For research use only.