

Product Name: T2R16 Rabbit Polyclonal Antibody
Catalog #: APRab18561



Summary

| | |
|------------------------|----------------------------------|
| Production Name | T2R16 Rabbit Polyclonal Antibody |
| Description | Rabbit Polyclonal Antibody |
| Host | Rabbit |
| Application | WB |
| Reactivity | Human,Rat,Mouse |

Performance

| | |
|---------------------|--|
| Conjugation | Unconjugated |
| Modification | Unmodified |
| Isotype | IgG |
| Clonality | Polyclonal |
| Form | Liquid |
| Storage | Store at 4°C short term. Aliquot and store at -20°C long term. Avoid freeze/thaw cycles. |
| Buffer | Liquid in PBS containing 50% glycerol, 0.5% BSA and 0.02% New type preservative N. |
| Purification | Affinity purification |

Immunogen

| | |
|--------------------------|--|
| Gene Name | TAS2R16 |
| Alternative Names | TAS2R16; Taste receptor type 2 member 16; T2R16 |
| Gene ID | 50833.0 |
| SwissProt ID | Q9NYV7.The antiserum was produced against synthesized peptide derived from human TAS2R16. AA range:136-185 |

Application

| | |
|-------------------------|----------------------------------|
| Dilution Ratio | WB 1:500-1:2000. ELISA: 1:20000. |
| Molecular Weight | 34kD |

Background

This gene encodes a member of a family of candidate taste receptors that are members of the G protein-coupled receptor

Product Name: T2R16 Rabbit Polyclonal Antibody
Catalog #: APRab18561

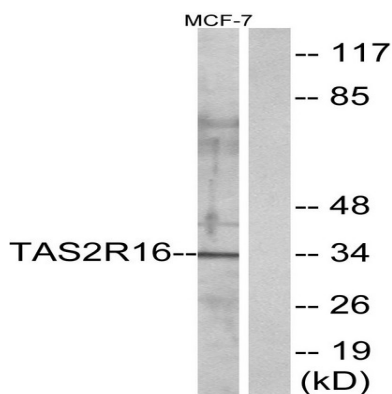


superfamily. These family members are specifically expressed by taste receptor cells of the tongue and palate epithelia. Each of these apparently intronless genes encodes a 7-transmembrane receptor protein, functioning as a bitter taste receptor. This gene is clustered with another 3 candidate taste receptor genes in chromosome 7 and is genetically linked to loci that influence bitter perception. [provided by RefSeq, Jul 2008],function:Gustducin-coupled receptor implicated in the perception of bitter compounds in the oral cavity and the gastrointestinal tract. Signals through PLCB2 and the calcium-regulated cation channel TRPM5.,miscellaneous:Confers bitter perception of salicin to non-taster mice.,miscellaneous:Several bitter taste receptors are expressed in a single taste receptor cell.,polymorphism:The Lys-172 polymorphism in TAS2R16 is associated with genetic susceptibility to alcoholism [MIM:103780].,similarity:Belongs to the G-protein coupled receptor T2R family.,tissue specificity:Expressed in a subset of gustducin-positive taste receptor cells of the tongue.,

Research Area

Taste transduction;

Image Data



Western blot analysis of lysates from MCF-7 cells, using TAS2R16 Antibody. The lane on the right is blocked with the synthesized peptide.

Note

For research use only.