

Product Name: SYP Rabbit Polyclonal Antibody
Catalog #: APRab18520



Summary

Production Name	SYP Rabbit Polyclonal Antibody
Description	Rabbit Polyclonal Antibody
Host	Rabbit
Application	IHC, WB, ELISA
Reactivity	Human, Mouse, Rat

Performance

Conjugation	Unconjugated
Modification	Unmodified
Isotype	IgG
Clonality	Polyclonal
Form	Liquid
Storage	Store at 4°C short term. Aliquot and store at -20°C long term. Avoid freeze/thaw cycles.
Buffer	Liquid in PBS containing 50% glycerol, 0.5% BSA and 0.02% New type preservative N.
Purification	Affinity purification

Immunogen

Gene Name	SYP
Alternative Names	SYP; Synaptophysin; Major synaptic vesicle protein p38
Gene ID	6855.0
SwissProt ID	P08247. The antiserum was produced against synthesized peptide derived from human Synaptophysin. AA range: 101-150

Application

Dilution Ratio	WB 1:500 - 1:2000. IHC 1:100 - 1:300. ELISA: 1:10000..
Molecular Weight	38kD

Background

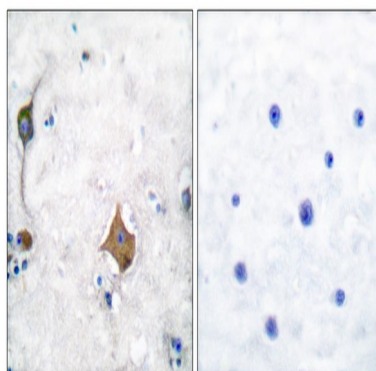
Product Name: SYP Rabbit Polyclonal Antibody
Catalog #: APRab18520



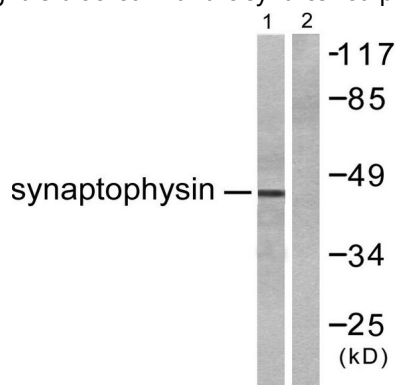
This gene encodes an integral membrane protein of small synaptic vesicles in brain and endocrine cells. The protein also binds cholesterol and is thought to direct targeting of vesicle-associated membrane protein 2 (synaptobrevin) to intracellular compartments. Mutations in this gene are associated with X-linked mental retardation (XLMR). [provided by RefSeq, Aug 2011],domain:The calcium-binding activity is thought to be localized in the cytoplasmic tail of the protein.,function:Possibly involved in structural functions as organizing other membrane components or in targeting the vesicles to the plasma membrane.,online information:Synaptophysin entry,PTM:Ubiquitinated; mediated by SIAH1 or SIAH2 and leading to its subsequent proteasomal degradation.,similarity:Belongs to the synaptophysin/synaptobrevin family.,similarity:Contains 1 MARVEL domain.,subunit:Homohexamer or homotetramer.,tissue specificity:Characteristic of a type of small (30-80 nm) neurosecretory vesicles, including presynaptic vesicles, but also vesicles of various neuroendocrine cells of both neuronal and epithelial phenotype.,

Research Area

Image Data

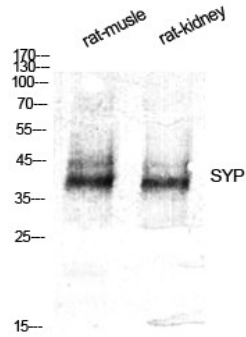


Immunohistochemistry analysis of paraffin-embedded human brain tissue, using Synaptophysin Antibody. The picture on the right is blocked with the synthesized peptide.



Western blot analysis of lysates from LOVO cells, using Synaptophysin Antibody. The lane on the right is blocked with the synthesized peptide.

Product Name: SYP Rabbit Polyclonal Antibody
Catalog #: APRab18520



Western Blot analysis of various cells using SYP Polyclonal Antibody diluted at 1: 500

Note

For research use only.