

## Summary

<b>Production Name</b>	SYNE2 Rabbit Polyclonal Antibody
<b>Description</b>	Rabbit Polyclonal Antibody
<b>Host</b>	Rabbit
<b>Application</b>	WB,ELISA
<b>Reactivity</b>	Human,Mouse

## Performance

<b>Conjugation</b>	Unconjugated
<b>Modification</b>	Unmodified
<b>Isotype</b>	IgG
<b>Clonality</b>	Polyclonal
<b>Form</b>	Liquid
<b>Storage</b>	Store at 4°C short term. Aliquot and store at -20°C long term. Avoid freeze/thaw cycles.
<b>Buffer</b>	Liquid in PBS containing 50% glycerol, and 0.02% New type preservative N.
<b>Purification</b>	Affinity purification

## Immunogen

<b>Gene Name</b>	SYNE2 KIAA1011 NUA
<b>Alternative Names</b>	
<b>Gene ID</b>	23224.0
<b>SwissProt ID</b>	Q8WXH0.Synthesized peptide derived from human protein . at AA range: 360-440

## Application

<b>Dilution Ratio</b>	IHC 1:50-300
<b>Molecular Weight</b>	757kD

## Background

The protein encoded by this gene is a nuclear outer membrane protein that binds cytoplasmic F-actin. This binding tethers the nucleus to the cytoskeleton and aids in the maintenance of the structural integrity of the nucleus. Several transcript

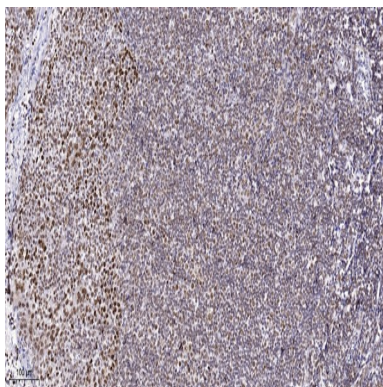
**Product Name: SYNE2 Rabbit Polyclonal Antibody**  
**Catalog #: APRab18505**



variants encoding different isoforms have been found for this gene. [provided by RefSeq, Mar 2009],domain:The Klarsicht domain mediates the nuclear envelope targeting.,function:Involved in the maintenance of nuclear organization and structural integrity. Probable anchoring protein which theters the nucleus to the cytoskeleton. Connects nuclei to the cytoskeleton by interacting with the nuclear envelope and with F-actin in the cytoplasm.,similarity:Belongs to the nesprin family.,similarity:Contains 1 actin-binding domain.,similarity:Contains 1 KASH domain.,similarity:Contains 13 LRR (leucine-rich) repeats.,similarity:Contains 2 CH (calponin-homology) domains.,similarity:Contains 9 spectrin repeats.,subcellular location:The largest part of the protein is cytoplasmic, while its C-terminal part is associated with the nuclear envelope, most probably the outer nuclear membrane. Remains associated with the nuclear envelope during its breakdown in mitotic cells.,subunit:Interacts with F-actin via its N-terminal domain.,tissue specificity:Widely expressed, with higher level in kidney, adult and fetal liver, stomach and placenta. Weakly expressed in skeletal muscle and brain. Isoform 5 is highly expressed in pancreas, skeletal muscle and heart.,

## Research Area

## Image Data



Immunohistochemical analysis of paraffin-embedded human tonsil. 1, Antibody was diluted at 1:200 (4° overnight) . 2, Tris-EDTA,pH9.0 was used for antigen retrieval. 3,Secondary antibody was diluted at 1:200 (room temperature, 45min) .

## Note

For research use only.