

**Product Name: Synaptotagmin XVI Rabbit Polyclonal Antibody**  
**Catalog #: APRab18500**



---

## Summary

|                        |  |
|------------------------|--|
| <b>Production Name</b> | Synaptotagmin XVI Rabbit Polyclonal Antibody |
| <b>Description</b>     | Rabbit Polyclonal Antibody                   |
| <b>Host</b>            | Rabbit                                       |
| <b>Application</b>     | WB,ELISA                                     |
| <b>Reactivity</b>      | Human,Rat,Mouse                              |

## Performance

|                     |  |
|---------------------|--|
| <b>Conjugation</b>  | Unconjugated   |
| <b>Modification</b> | Unmodified   |
| <b>Isotype</b>      | IgG  |
| <b>Clonality</b>    | Polyclonal   |
| <b>Form</b>         | Liquid   |
| <b>Storage</b>      | Store at 4°C short term. Aliquot and store at -20°C long term. Avoid freeze/thaw cycles. |
| <b>Buffer</b>       | Liquid in PBS containing 50% glycerol, 0.5% BSA and 0.02% New type preservative N.       |
| <b>Purification</b> | Affinity purification  |

## Immunogen

|                          |   |
|--------------------------|---|
| <b>Gene Name</b>         | SYT16   |
| <b>Alternative Names</b> | SYT16; STREP14; SYT14L; SYT14R; Synaptotagmin-16; Chr14Sy; Synaptotagmin 14-like protein; Synaptotagmin XIV-related protein |
| <b>Gene ID</b>           | 83851.0   |
| <b>SwissProt ID</b>      | Q17RD7.The antiserum was produced against synthesized peptide derived from human SYT16. AA range:231-280                    |

## Application

|                         |                                    |
|-------------------------|------------------------------------|
| <b>Dilution Ratio</b>   | WB 1:500 - 1:2000. ELISA: 1:40000. |
| <b>Molecular Weight</b> | 72kD                               |

**Product Name: Synaptotagmin XVI Rabbit Polyclonal Antibody**  
**Catalog #: APRab18500**

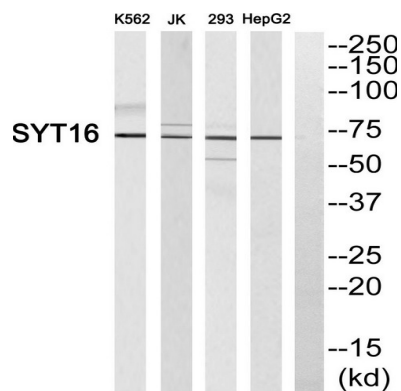


## Background

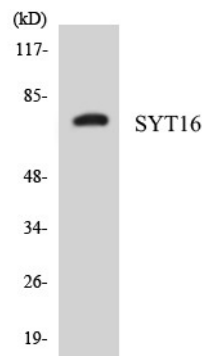
function:May be involved in the trafficking and exocytosis of secretory vesicles in non-neuronal tissues. Is Ca(2+)-independent.,sequence caution:Translated as Gln.,similarity:Belongs to the synaptotagmin family.,similarity:Contains 2 C2 domains.,subunit:Homodimer. Can also form heterodimers.,tissue specificity:Expressed in brain.,function:May be involved in the trafficking and exocytosis of secretory vesicles in non-neuronal tissues. Is Ca(2+)-independent.,sequence caution:Translated as Gln.,similarity:Belongs to the synaptotagmin family.,similarity:Contains 2 C2 domains.,subunit:Homodimer. Can also form heterodimers.,tissue specificity:Expressed in brain.,

## Research Area

## Image Data



Western blot analysis of SYT16 Antibody. The lane on the right is blocked with the SYT16 peptide.



Western blot analysis of the lysates from HepG2 cells using SYT16 antibody.

## Note

For research use only.

**Product Name: Synaptotagmin XVI Rabbit Polyclonal  
Antibody**  
**Catalog #: APRab18500**

---

