

Product Name: Synaptotagmin XIII Rabbit Polyclonal Antibody
Catalog #: APRab18499



Summary

Production Name	Synaptotagmin XIII Rabbit Polyclonal Antibody
Description	Rabbit Polyclonal Antibody
Host	Rabbit
Application	WB,ELISA
Reactivity	Human,Mouse,Rat

Performance

Conjugation	Unconjugated
Modification	Unmodified
Isotype	IgG
Clonality	Polyclonal
Form	Liquid
Storage	Store at 4°C short term. Aliquot and store at -20°C long term. Avoid freeze/thaw cycles.
Buffer	Liquid in PBS containing 50% glycerol, 0.5% BSA and 0.02% New type preservative N.
Purification	Affinity purification

Immunogen

Gene Name	SYT13
Alternative Names	SYT13; KIAA1427; Synaptotagmin-13; Synaptotagmin XIII; SytXIII
Gene ID	57586.0
SwissProt ID	Q7L8C5.The antiserum was produced against synthesized peptide derived from human SYT13. AA range:321-370

Application

Dilution Ratio	WB 1:500 - 1:2000. ELISA: 1:10000
Molecular Weight	48kD

Product Name: Synaptotagmin XIII Rabbit Polyclonal Antibody
Catalog #: APRab18499



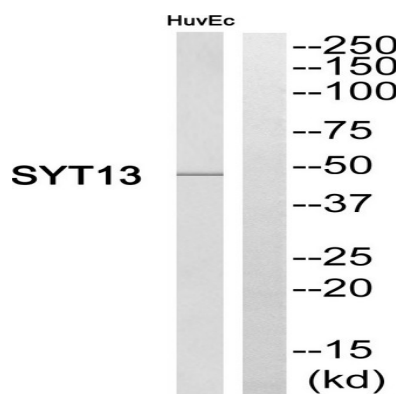
Background

synaptotagmin 13(SYT13) Homo sapiens This gene encodes a member of the large synaptotagmin protein family. Family members have an extracellular N-terminal transmembrane domain and a cytoplasmic C terminus with two tandem C2 domains (C2A and C2B). Synaptotagmin family members can form homo- and heteromeric complexes with each other. They also have different biochemical properties and developmental profiles, and patterns of tissue distribution.

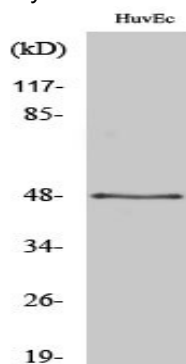
Synaptotagmins function as membrane traffickers in multicellular organisms. Two alternatively spliced transcript variants that encode different protein isoforms have been described for this gene. [provided by RefSeq, Oct 2011],domain:The first C2 domain/C2A does not mediate Ca(2+)-dependent phospholipid binding.,domain:The second C2 domain/C2B domain binds phospholipids regardless of whether calcium is present.,function:May be involved in transport vesicle docking to the plasma membrane.,similarity:Belongs to the synaptotagmin family.,similarity:Contains 2 C2 domains.,subunit:Interacts with NRXN1.,tissue specificity:Expressed in brain, pancreas and kidney.,

Research Area

Image Data



Western blot analysis of SYT13 Antibody. The lane on the right is blocked with the SYT13 peptide.



Western Blot analysis of various cells using Synaptotagmin XIII Polyclonal Antibody

**Product Name: Synaptotagmin XIII Rabbit Polyclonal
Antibody**
Catalog #: APRab18499



Note

For research use only.