
Summary

Production Name	SVOP Rabbit Polyclonal Antibody
Description	Rabbit Polyclonal Antibody
Host	Rabbit
Application	WB,ELISA
Reactivity	Human,Mouse,Rat

Performance

Conjugation	Unconjugated
Modification	Unmodified
Isotype	IgG
Clonality	Polyclonal
Form	Liquid
Storage	Store at 4°C short term. Aliquot and store at -20°C long term. Avoid freeze/thaw cycles.
Buffer	Liquid in PBS containing 50% glycerol, 0.5% BSA and 0.02% New type preservative N.
Purification	Affinity purification

Immunogen

Gene Name	SVOP
Alternative Names	SVOP; Synaptic vesicle 2-related protein; SV2-related protein
Gene ID	55530.0
SwissProt ID	Q8N4V2.The antiserum was produced against synthesized peptide derived from human SVOP. AA range:271-320

Application

Dilution Ratio	WB 1:500 - 1:2000. ELISA: 1:40000
Molecular Weight	61kD

Background

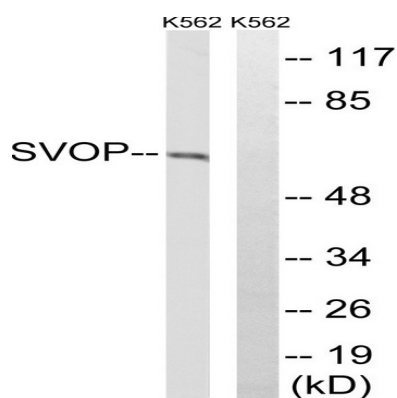
Product Name: SVOP Rabbit Polyclonal Antibody
Catalog #: APRab18467



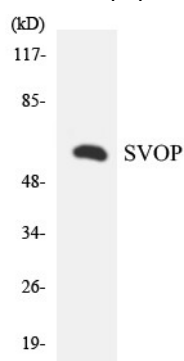
similarity:Belongs to the major facilitator superfamily.,similarity:Belongs to the major facilitator superfamily.,

Research Area

Image Data



Western blot analysis of lysates from K562 cells, using SVOP Antibody. The lane on the right is blocked with the synthesized peptide.



Western blot analysis of the lysates from Jurkat cells using SVOP antibody.

Note

For research use only.