

Summary

Production Name	SUHW3 Rabbit Polyclonal Antibody
Description	Rabbit Polyclonal Antibody
Host	Rabbit
Application	WB,ELISA
Reactivity	Human,Rat,Mouse

Performance

Conjugation	Unconjugated
Modification	Unmodified
Isotype	IgG
Clonality	Polyclonal
Form	Liquid
Storage	Store at 4°C short term. Aliquot and store at -20°C long term. Avoid freeze/thaw cycles.
Buffer	Liquid in PBS containing 50% glycerol, 0.5% BSA and 0.02% New type preservative N.
Purification	Affinity purification

Immunogen

Gene Name	ZNF280C
Alternative Names	ZNF280C; SUHW3; ZNF633; Zinc finger protein 280C; Suppressor of hairy wing homolog 3; Zinc finger protein 633
Gene ID	55609.0
SwissProt ID	Q8ND82.The antiserum was produced against synthesized peptide derived from human ZNF280C. AA range:251-300

Application

Dilution Ratio	WB 1:500 - 1:2000. ELISA: 1:40000
Molecular Weight	85kD

Product Name: SUHW3 Rabbit Polyclonal Antibody
Catalog #: APRab18434

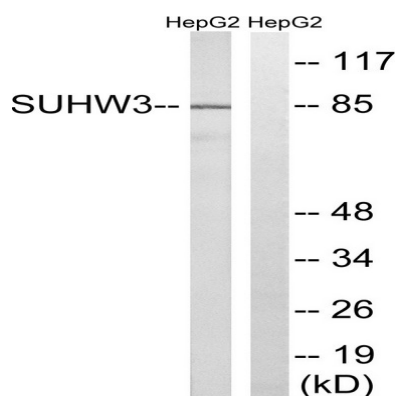


Background

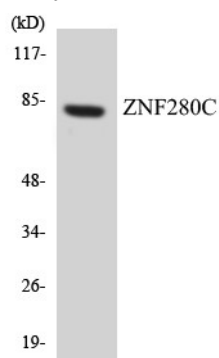
This gene encodes a member of the zinc finger domain-containing protein family. This family member contains multiple Cys2-His2(C2H2)-type zinc finger domains, the most common type of zinc finger domain that self-folds to form a beta-beta-alpha structure that binds a zinc ion. [provided by RefSeq, Aug 2011],function:May function as a transcription factor.,PTM:Phosphorylated upon DNA damage, probably by ATM or ATR.,sequence caution:Contaminating sequence. Potential poly-A sequence.,similarity:Contains 5 C2H2-type zinc fingers.,

Research Area

Image Data



Western blot analysis of lysates from HepG2 cells, using ZNF280C Antibody. The lane on the right is blocked with the synthesized peptide.



Western blot analysis of the lysates from HeLa cells using ZNF280C antibody.

Note

For research use only.