

## Summary

<b>Production Name</b>	Striatin Rabbit Polyclonal Antibody
<b>Description</b>	Rabbit Polyclonal Antibody
<b>Host</b>	Rabbit
<b>Application</b>	WB,IHC,ELISA
<b>Reactivity</b>	Human,Mouse,Rat

## Performance

<b>Conjugation</b>	Unconjugated
<b>Modification</b>	Unmodified
<b>Isotype</b>	IgG
<b>Clonality</b>	Polyclonal
<b>Form</b>	Liquid
<b>Storage</b>	Store at 4°C short term. Aliquot and store at -20°C long term. Avoid freeze/thaw cycles.
<b>Buffer</b>	Liquid in PBS containing 50% glycerol, 0.5% BSA and 0.02% New type preservative N.
<b>Purification</b>	Affinity purification

## Immunogen

<b>Gene Name</b>	STRN
<b>Alternative Names</b>	STRN; Striatin
<b>Gene ID</b>	6801.0
<b>SwissProt ID</b>	O43815.Synthesized peptide derived from the C-terminal region of human Striatin.

## Application

<b>Dilution Ratio</b>	WB 1:500 - 1:2000. IHC-p: 1:100-300 ELISA: 1:5000..
<b>Molecular Weight</b>	86kD

## Background

function:Calmodulin-binding protein which may function as scaffolding or signaling protein and may play a role in

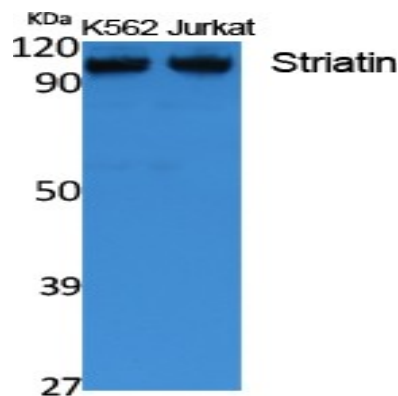
**Product Name: Striatin Rabbit Polyclonal Antibody**  
**Catalog #: APRab18408**



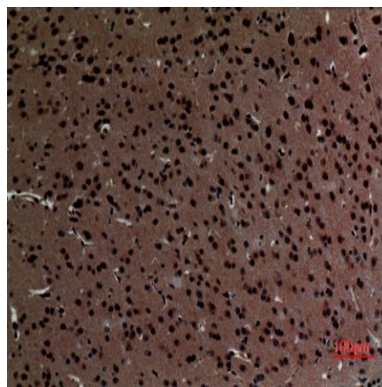
dendritic Ca(2+) signaling.,similarity:Belongs to the WD repeat striatin family.,similarity:Contains 6 WD repeats.,subunit:Interacts with protein phosphatase 2A (PP2A) .,tissue specificity:Preferentially expressed in brain.,function:Calmodulin-binding protein which may function as scaffolding or signaling protein and may play a role in dendritic Ca(2+) signaling.,similarity:Belongs to the WD repeat striatin family.,similarity:Contains 6 WD repeats.,subunit:Interacts with protein phosphatase 2A (PP2A) .,tissue specificity:Preferentially expressed in brain.,

## Research Area

## Image Data

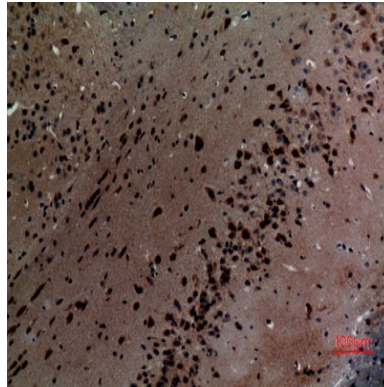


Western Blot analysis of extracts from K562 cells, using Striatin Polyclonal Antibody.. Secondary antibody was diluted at 1:20000



Immunohistochemical analysis of paraffin-embedded mouse-brain, antibody was diluted at 1:100

**Product Name: Striatin Rabbit Polyclonal Antibody**  
**Catalog #: APRab18408**



Immunohistochemical analysis of paraffin-embedded mouse-brain, antibody was diluted at 1:100

**Note**

For research use only.