
Summary

Production Name	StIp1 Rabbit Polyclonal Antibody
Description	Rabbit Polyclonal Antibody
Host	Rabbit
Application	WB
Reactivity	Human,Rat,Mouse

Performance

Conjugation	Unconjugated
Modification	Unmodified
Isotype	IgG
Clonality	Polyclonal
Form	Liquid
Storage	Store at 4°C short term. Aliquot and store at -20°C long term. Avoid freeze/thaw cycles.
Buffer	Liquid in PBS containing 50% glycerol, 0.5% BSA and 0.02% New type preservative N.
Purification	Affinity purification

Immunogen

Gene Name	ELP2
Alternative Names	ELP2; STATIP1; Elongator complex protein 2; ELP2; SHINC-2; STAT3-interacting protein 1; StIP1
Gene ID	55250.0
SwissProt ID	Q6IA86.The antiserum was produced against synthesized peptide derived from human ELP2. AA range:771-820

Application

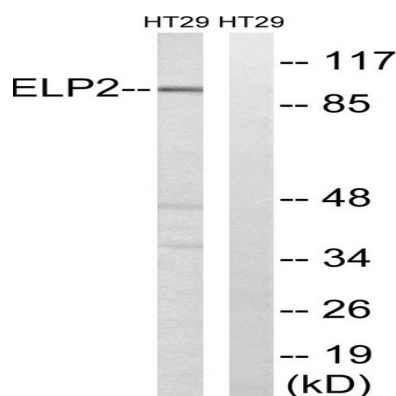
Dilution Ratio	WB 1:500-2000
Molecular Weight	93kD

Background

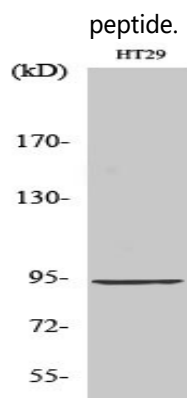
The protein encoded by this gene is a core subunit of the elongator complex, a histone acetyltransferase complex that associates with RNA polymerase II. In addition to histone acetylation, the encoded protein effects transcriptional elongation and may help remodel chromatin. [provided by RefSeq, May 2016],function:Acts as subunit of the RNA polymerase II elongator complex, which is a histone acetyltransferase component of the RNA polymerase II (Pol II) holoenzyme and is involved in transcriptional elongation. Elongator may play a role in chromatin remodeling and is involved in acetylation of histones H3 and probably H4.,function:Regulates the ligand-dependent activation of STAT3.,similarity:Belongs to the WD repeat ELP2 family.,similarity:Contains 14 WD repeats.,subunit:Component of the RNA polymerase II elongator complex (Elongator), which consists of IKBKAP/ELP1, STIP1/ELP2, ELP3, ELP4, and two yet unidentified proteins, p30 and p38. Elongator associates with the C-terminal domain (CTD) of Pol II largest subunit. Interacts with STAT3 and JAKs.,

Research Area

Image Data



Western blot analysis of lysates from HT-29 cells, using ELP2 Antibody. The lane on the right is blocked with the synthesized peptide.



Western Blot analysis of various cells using Stlp1 Polyclonal Antibody

Product Name: StIp1 Rabbit Polyclonal Antibody
Catalog #: APRab18388



Note

For research use only.