

Summary

Production Name	STEAP1 Rabbit Polyclonal Antibody
Description	Rabbit Polyclonal Antibody
Host	Rabbit
Application	IHC, WB,
Reactivity	Human, Rat, Mouse

Performance

Conjugation	Unconjugated
Modification	Unmodified
Isotype	IgG
Clonality	Polyclonal
Form	Liquid
Storage	Store at 4°C short term. Aliquot and store at -20°C long term. Avoid freeze/thaw cycles.
Buffer	Liquid in PBS containing 50% glycerol, 0.5% BSA and 0.02% New type preservative N.
Purification	Affinity purification

Immunogen

Gene Name	STEAP1
Alternative Names	STEAP1; PRSS24; STEAP; Metalloreductase STEAP1; Six-transmembrane epithelial antigen of prostate 1
Gene ID	26872.0
SwissProt ID	Q9UHE8. The antiserum was produced against synthesized peptide derived from human STEAP1. AA range:31-80

Application

Dilution Ratio	WB 1:500 - 1:2000. IHC 1:100 - 1:300. ELISA: 1:10000..
Molecular Weight	36kD

Product Name: STEAP1 Rabbit Polyclonal Antibody
Catalog #: APRab18380

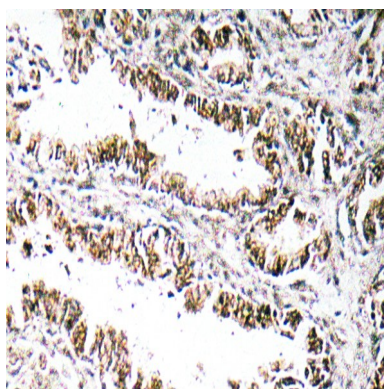


Background

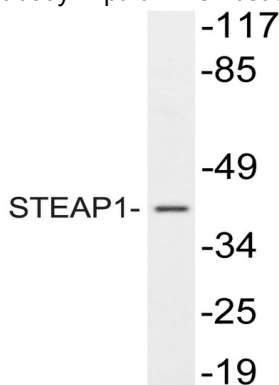
This gene is predominantly expressed in prostate tissue, and is found to be upregulated in multiple cancer cell lines. The gene product is predicted to be a six-transmembrane protein, and was shown to be a cell surface antigen significantly expressed at cell-cell junctions. [provided by RefSeq, Jul 2008],cofactor:FAD.,function:Metalloreductase that has the ability to reduce both Fe(3+) to Fe(2+) and Cu(2+) to Cu(1+). Uses NAD(+) as acceptor.,similarity:Belongs to the STEAP family.,similarity:Contains 1 ferric oxidoreductase domain.,tissue specificity:Ubiquitously expressed. Highly expressed in prostate tumors.,

Research Area

Image Data

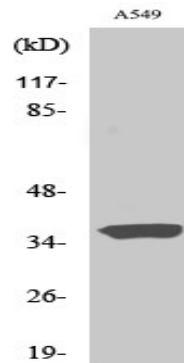


Immunohistochemistry analysis of STEAP1 antibody in paraffin-embedded human prostate carcinoma tissue.

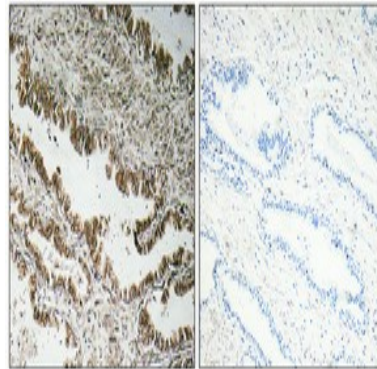


Western blot analysis of lysate from A549, using STEAP1 antibody.

Product Name: STEAP1 Rabbit Polyclonal Antibody
Catalog #: APRab18380



Western Blot analysis of various cells using STEAP1 Polyclonal Antibody



Immunohistochemical analysis of paraffin-embedded Human prostate cancer. Antibody was diluted at 1:100 (4°, overnight) . High-pressure and temperature Tris-EDTA, pH8.0 was used for antigen retrieval. Negative control (right) obtained from antibody was pre-absorbed by immunogen peptide.

Note

For research use only.