

---

## Summary

<b>Production Name</b>	Stathmin-3 Rabbit Polyclonal Antibody
<b>Description</b>	Rabbit Polyclonal Antibody
<b>Host</b>	Rabbit
<b>Application</b>	WB,ELISA
<b>Reactivity</b>	Human,Mouse,Rat

## Performance

<b>Conjugation</b>	Unconjugated
<b>Modification</b>	Unmodified
<b>Isotype</b>	IgG
<b>Clonality</b>	Polyclonal
<b>Form</b>	Liquid
<b>Storage</b>	Store at 4°C short term. Aliquot and store at -20°C long term. Avoid freeze/thaw cycles.
<b>Buffer</b>	Liquid in PBS containing 50% glycerol, 0.5% BSA and 0.02% New type preservative N.
<b>Purification</b>	Affinity purification

## Immunogen

<b>Gene Name</b>	STMN3
<b>Alternative Names</b>	STMN3; SCLIP; Stathmin-3; SCG10-like protein
<b>Gene ID</b>	50861.0
<b>SwissProt ID</b>	Q9NZ72.The antiserum was produced against synthesized peptide derived from human STMN3. AA range:61-110

## Application

<b>Dilution Ratio</b>	WB 1:500-2000; ELISA 2000-20000
<b>Molecular Weight</b>	22kD

## Background

---

**Product Name: Stathmin-3 Rabbit Polyclonal Antibody**  
**Catalog #: APRab18372**

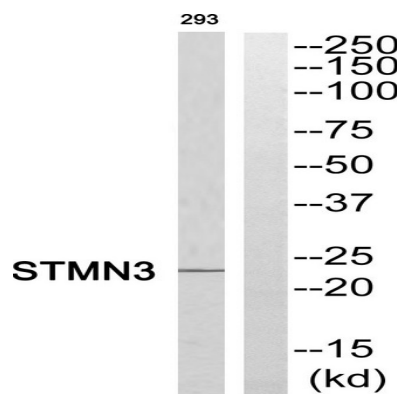


This gene encodes a protein which is a member of the stathmin protein family. Members of this protein family form a complex with tubulins at a ratio of 2 tubulins for each stathmin protein. Microtubules require the ordered assembly of alpha- and beta-tubulins, and formation of a complex with stathmin disrupts microtubule formation and function. A pseudogene of this gene is located on chromosome 22. Alternative splicing results in multiple transcript variants. [provided by RefSeq, Jan 2013],similarity:Belongs to the stathmin family.,tissue specificity:Neuron specific.,

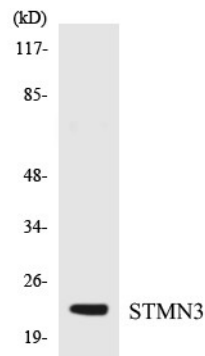
## Research Area

Regulation of Microtubule Dynamics

## Image Data

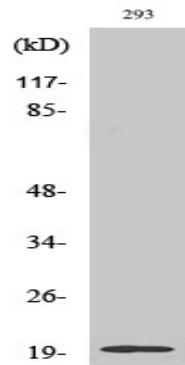


Western blot analysis of STMN3 Antibody. The lane on the right is blocked with the STMN3 peptide.



Western blot analysis of the lysates from K562 cells using STMN3 antibody.

**Product Name: Stathmin-3 Rabbit Polyclonal Antibody**  
**Catalog #: APRab18372**



Western Blot analysis of various cells using Stathmin-3 Polyclonal Antibody

**Note**

For research use only.