

**Product Name: STAC2 Rabbit Polyclonal Antibody**  
**Catalog #: APRab18330**



## Summary

<b>Production Name</b>	STAC2 Rabbit Polyclonal Antibody
<b>Description</b>	Rabbit Polyclonal Antibody
<b>Host</b>	Rabbit
<b>Application</b>	WB
<b>Reactivity</b>	Human,Mouse,Rat

## Performance

<b>Conjugation</b>	Unconjugated
<b>Modification</b>	Unmodified
<b>Isotype</b>	IgG
<b>Clonality</b>	Polyclonal
<b>Form</b>	Liquid
<b>Storage</b>	Store at 4°C short term. Aliquot and store at -20°C long term. Avoid freeze/thaw cycles.
<b>Buffer</b>	Liquid in PBS containing 50% glycerol, 0.5% BSA and 0.02% New type preservative N.
<b>Purification</b>	Affinity purification

## Immunogen

<b>Gene Name</b>	STAC2
<b>Alternative Names</b>	STAC2; SH3 and cysteine-rich domain-containing protein 2; 24b2/STAC2; Src homology 3 and cysteine-rich domain-containing protein 2
<b>Gene ID</b>	342667.0
<b>SwissProt ID</b>	Q6ZMT1.The antiserum was produced against synthesized peptide derived from human STAC2. AA range:211-260

## Application

<b>Dilution Ratio</b>	WB 1:500-1:2000. ELISA: 1:20000.
<b>Molecular Weight</b>	40kD

## Background

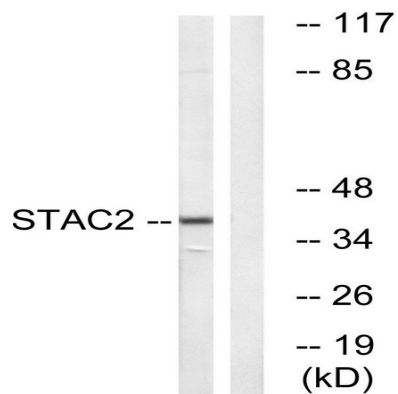
**Product Name: STAC2 Rabbit Polyclonal Antibody**  
**Catalog #: APRab18330**



similarity:Contains 1 phorbol-ester/DAG-type zinc finger.,similarity:Contains 1 SH3 domain.,similarity:Contains 1 phorbol-ester/DAG-type zinc finger.,similarity:Contains 1 SH3 domain.,

## Research Area

## Image Data



Western blot analysis of lysates from K562 cells, using STAC2 Antibody. The lane on the right is blocked with the synthesized peptide.

## Note

For research use only.