

---

## Summary

<b>Production Name</b>	ST18 Rabbit Polyclonal Antibody
<b>Description</b>	Rabbit Polyclonal Antibody
<b>Host</b>	Rabbit
<b>Application</b>	WB,ELISA
<b>Reactivity</b>	Human,Rat,Mouse

## Performance

<b>Conjugation</b>	Unconjugated
<b>Modification</b>	Unmodified
<b>Isotype</b>	IgG
<b>Clonality</b>	Polyclonal
<b>Form</b>	Liquid
<b>Storage</b>	Store at 4°C short term. Aliquot and store at -20°C long term. Avoid freeze/thaw cycles.
<b>Buffer</b>	Liquid in PBS containing 50% glycerol, 0.5% BSA and 0.02% New type preservative N.
<b>Purification</b>	Affinity purification

## Immunogen

<b>Gene Name</b>	ST18
<b>Alternative Names</b>	ST18; KIAA0535; ZNF387; Suppression of tumorigenicity 18 protein; Zinc finger protein 387
<b>Gene ID</b>	9705.0
<b>SwissProt ID</b>	O60284.The antiserum was produced against synthesized peptide derived from human ZNF387. AA range:41-90

## Application

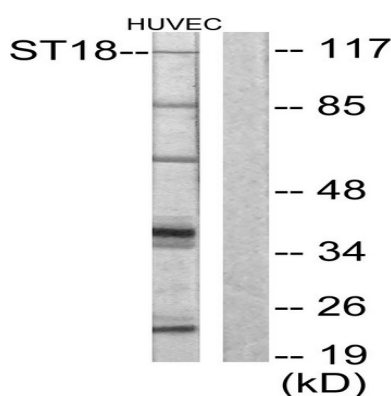
<b>Dilution Ratio</b>	WB 1:500 - 1:2000. ELISA: 1:40000. Not yet tested in other applications.
<b>Molecular Weight</b>	115kD

## Background

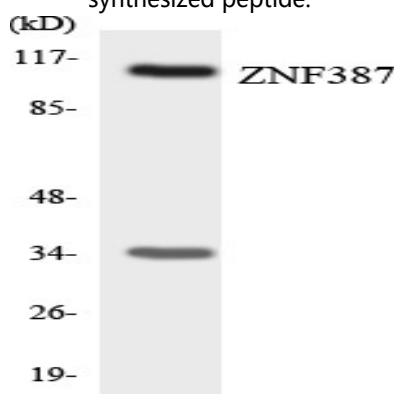
function: Repressor that binds to DNA sequences containing a bipartite element consisting of a direct repeat of the sequence 5'-AAAGTTT-3' separated by 2-9 nucleotides. Represses basal transcription activity from target promoters (By similarity). Inhibits colony formation in cultured breast cancer cells., similarity: Contains 6 C2HC-type zinc fingers., tissue specificity: Detected at low levels in heart, liver, kidney, skeletal muscle, pancreas, testis, ovary and prostate. Detected at even lower levels in mammary epithelial cells and breast cancer cells., function: Repressor that binds to DNA sequences containing a bipartite element consisting of a direct repeat of the sequence 5'-AAAGTTT-3' separated by 2-9 nucleotides. Represses basal transcription activity from target promoters (By similarity). Inhibits colony formation in cultured breast cancer cells., similarity: Contains 6 C2HC-type zinc fingers., tissue specificity: Detected at low levels in heart, liver, kidney, skeletal muscle, pancreas, testis, ovary and prostate. Detected at even lower levels in mammary epithelial cells and breast cancer cells.,

## Research Area

## Image Data



Western blot analysis of lysates from HUVEC cells, using ZNF387 Antibody. The lane on the right is blocked with the synthesized peptide.



Western blot analysis of the lysates from COLO205 cells using ZNF387 antibody.

**Product Name: ST18 Rabbit Polyclonal Antibody**  
**Catalog #: APRab18318**



Western Blot analysis of various cells using ST18 Polyclonal Antibody cells nucleus extracted by Minute TM Cytoplasmic and Nuclear Fractionation kit (SC-003, Inventbiotech, MN, USA) .

**Note**

For research use only.