

## Summary

<b>Production Name</b>	SSBP1 Rabbit Polyclonal Antibody
<b>Description</b>	Rabbit Polyclonal Antibody
<b>Host</b>	Rabbit
<b>Application</b>	IF,IHC,WB,
<b>Reactivity</b>	Human,Mouse,Rat,Cow

## Performance

<b>Conjugation</b>	Unconjugated
<b>Modification</b>	Unmodified
<b>Isotype</b>	IgG
<b>Clonality</b>	Polyclonal
<b>Form</b>	Liquid
<b>Storage</b>	Store at 4°C short term. Aliquot and store at -20°C long term. Avoid freeze/thaw cycles.
<b>Buffer</b>	Liquid in PBS containing 50% glycerol, 0.5% BSA and 0.02% New type preservative N.
<b>Purification</b>	Affinity purification

## Immunogen

<b>Gene Name</b>	SSBP1
<b>Alternative Names</b>	SSBP1; SSBP; Single-stranded DNA-binding protein; mitochondrial; Mt-SSB; MtSSB; PWP1-interacting protein 17
<b>Gene ID</b>	6742.0
<b>SwissProt ID</b>	Q04837.The antiserum was produced against synthesized peptide derived from human MtSSB. AA range:99-148

## Application

<b>Dilution Ratio</b>	WB 1:500 - 1:2000 IHC 1:100 - 1:300. IF 1:200 - 1:1000. ELISA: 1:20000. Not yet tested in other applications.
<b>Molecular Weight</b>	17kD

**Product Name: SSBP1 Rabbit Polyclonal Antibody**  
**Catalog #: APRab18297**



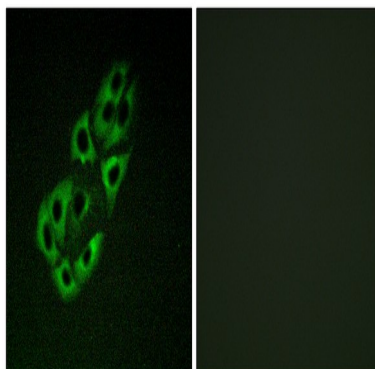
## Background

SSBP1 is a housekeeping gene involved in mitochondrial biogenesis (Tiranti et al., 1995 [PubMed 7789991]). It is also a subunit of a single-stranded DNA (ssDNA)-binding complex involved in the maintenance of genome stability (Huang et al., 2009) [PubMed 19683501]. [supplied by OMIM, Feb 2010], function: This protein binds preferentially and cooperatively to ssDNA. Probably involved in mitochondrial DNA replication., PTM: Phosphorylated upon DNA damage, probably by ATM or ATR., similarity: Contains 1 SSB domain., subunit: Homotetramer.,

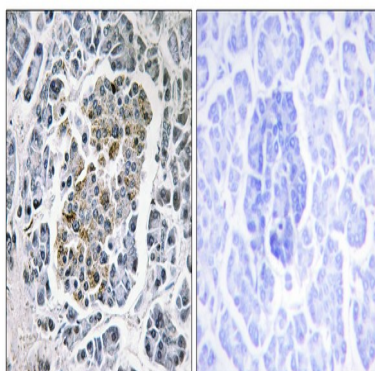
## Research Area

DNA replication; Mismatch repair; Homologous recombination;

## Image Data

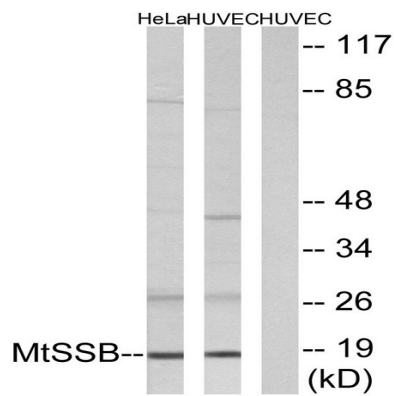


Immunofluorescence analysis of A549 cells, using MtSSB Antibody. The picture on the right is blocked with the synthesized peptide.



Immunohistochemistry analysis of paraffin-embedded human pancreas tissue, using MtSSB Antibody. The picture on the right is blocked with the synthesized peptide.

**Product Name: SSBP1 Rabbit Polyclonal Antibody**  
**Catalog #: APRab18297**



Western blot analysis of lysates from HUVEC and HeLa cells, using MtSSB Antibody. The lane on the right is blocked with the synthesized peptide.



Western Blot analysis of various cells using SSBP1 Polyclonal Antibody

## Note

For research use only.