

**Product Name: SRRM2 Rabbit Polyclonal Antibody**  
**Catalog #: APRab18287**



## Summary

<b>Production Name</b>	SRRM2 Rabbit Polyclonal Antibody
<b>Description</b>	Rabbit Polyclonal Antibody
<b>Host</b>	Rabbit
<b>Application</b>	WB,ELISA
<b>Reactivity</b>	Human,Mouse

## Performance

<b>Conjugation</b>	Unconjugated
<b>Modification</b>	Unmodified
<b>Isotype</b>	IgG
<b>Clonality</b>	Polyclonal
<b>Form</b>	Liquid
<b>Storage</b>	Store at 4°C short term. Aliquot and store at -20°C long term. Avoid freeze/thaw cycles.
<b>Buffer</b>	Liquid in PBS containing 50% glycerol, and 0.02% New type preservative N.
<b>Purification</b>	Affinity purification

## Immunogen

<b>Gene Name</b>	SRRM2 KIAA0324 SRL300 SRM300 HSPC075
<b>Alternative Names</b>	
<b>Gene ID</b>	23524.0
<b>SwissProt ID</b>	Q9UQ35.Synthesized peptide derived from human protein . at AA range: 2000-2080

## Application

<b>Dilution Ratio</b>	IHC 1:50-300
<b>Molecular Weight</b>	302kD

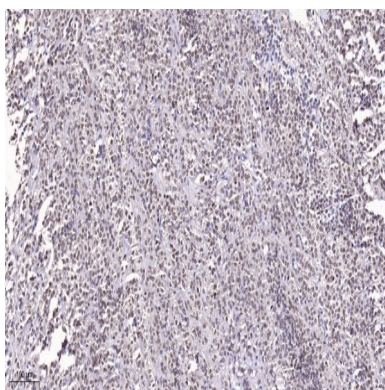
## Background

function:Part of pre- and post-splicing multiprotein mRNP complexes. May be involved in pre-mRNA processing events. Binds to RNA.,PTM:Phosphorylated upon DNA damage, probably by ATM or ATR.,sequence caution:Contaminating

sequence. Potential poly-A sequence.,similarity:Belongs to the CWC21 family.,subunit:Component of the active spliceosome. Found in a pre-mRNA splicing complex with SFRS4, SFRS5, SNRP70, SNRPA1, SRRM1 and SRRM2. Identified in the spliceosome C complex, at least composed of AQR, ASCC3L1, C19orf29, CDC40, CDC5L, CRNKL1, DDX23, DDX41, DDX48, DDX5, DGCR14, DHX35, DHX38, DHX8, EFTUD2, FRG1, GPATC1, HNRPA1, HNRPA2B1, HNRPA3, HNRPC, HNRPF, HNRPH1, HNRPK, HNRPM, HNRPR, HNRPU, KIAA1160, KIAA1604, LSM2, LSM3, MAGOH, MORG1, PABPC1, PLRG1, PNN, PPIE, PPIL1, PPIL3, PPWD1, PRPF19, PRPF4B, PRPF6, PRPF8, RALY, RBM22, RBM8A, RBMX, SART1, SF3A1, SF3A2, SF3A3, SF3B1, SF3B2, SF3B3, SFRS1, SKIV2L2, SNRPA1, SNRPB, SNRPB2, SNRPD1, SNRPD2, SNRPD3, SNRPE, SNRPF, SNRPG, SNW1, SRRM1, SRRM2, SYF2, SYNCRIP, TFIP11, THOC4, U2AF1, WDR57, XAB2 and ZCCHC8.,tissue specificity:Expressed in liver, placenta, and white blood cells.,function:Part of pre- and post-splicing multiprotein mRNP complexes. May be involved in pre-mRNA processing events. Binds to RNA.,PTM:Phosphorylated upon DNA damage, probably by ATM or ATR.,sequence caution:Contaminating sequence. Potential poly-A sequence.,similarity:Belongs to the CWC21 family.,subunit:Component of the active spliceosome. Found in a pre-mRNA splicing complex with SFRS4, SFRS5, SNRP70, SNRPA1, SRRM1 and SRRM2. Identified in the spliceosome C complex, at least composed of AQR, ASCC3L1, C19orf29, CDC40, CDC5L, CRNKL1, DDX23, DDX41, DDX48, DDX5, DGCR14, DHX35, DHX38, DHX8, EFTUD2, FRG1, GPATC1, HNRPA1, HNRPA2B1, HNRPA3, HNRPC, HNRPF, HNRPH1, HNRPK, HNRPM, HNRPR, HNRPU, KIAA1160, KIAA1604, LSM2, LSM3, MAGOH, MORG1, PABPC1, PLRG1, PNN, PPIE, PPIL1, PPIL3, PPWD1, PRPF19, PRPF4B, PRPF6, PRPF8, RALY, RBM22, RBM8A, RBMX, SART1, SF3A1, SF3A2, SF3A3, SF3B1, SF3B2, SF3B3, SFRS1, SKIV2L2, SNRPA1, SNRPB, SNRPB2, SNRPD1, SNRPD2, SNRPD3, SNRPE, SNRPF, SNRPG, SNW1, SRRM1, SRRM2, SYF2, SYNCRIP, TFIP11, THOC4, U2AF1, WDR57, XAB2 and ZCCHC8.,tissue specificity:Expressed in liver, placenta, and white blood cells.,

## Research Area

## Image Data



Immunohistochemical analysis of paraffin-embedded human Small intestinal stromal tumor. 1, Tris-EDTA,pH9.0 was used for antigen retrieval. 2 Antibody was diluted at 1:200 (4° overnight.3,Secondary antibody was diluted at 1:200 (room temperature, 45min) .

**Product Name: SRRM2 Rabbit Polyclonal Antibody**  
**Catalog #: APRab18287**

---



**Note**

For research use only.