

**Product Name: SR-6 Rabbit Polyclonal Antibody**  
**Catalog #: APRab18255**



## Summary

<b>Production Name</b>	SR-6 Rabbit Polyclonal Antibody
<b>Description</b>	Rabbit Polyclonal Antibody
<b>Host</b>	Rabbit
<b>Application</b>	WB
<b>Reactivity</b>	Human,Mouse,Rat

## Performance

<b>Conjugation</b>	Unconjugated
<b>Modification</b>	Unmodified
<b>Isotype</b>	IgG
<b>Clonality</b>	Polyclonal
<b>Form</b>	Liquid
<b>Storage</b>	Store at 4°C short term. Aliquot and store at -20°C long term. Avoid freeze/thaw cycles.
<b>Buffer</b>	Liquid in PBS containing 50% glycerol, 0.5% BSA and 0.02% New type preservative N.
<b>Purification</b>	Affinity purification

## Immunogen

<b>Gene Name</b>	HTR6
<b>Alternative Names</b>	HTR6; 5-hydroxytryptamine receptor 6; 5-HT-6; 5-HT6; Serotonin receptor 6
<b>Gene ID</b>	3362.0
<b>SwissProt ID</b>	P50406.The antiserum was produced against synthesized peptide derived from human 5-HT-6. AA range:221-270

## Application

<b>Dilution Ratio</b>	WB 1:500-1:2000. ELISA: 1:20000.
<b>Molecular Weight</b>	47kD

## Background

This gene encodes a protein that belongs to the seven-transmembrane G protein-coupled receptor family of proteins. The

**Product Name: SR-6 Rabbit Polyclonal Antibody**  
**Catalog #: APRab18255**

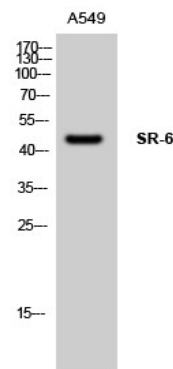


encoded protein couples with the Gs alpha subunit and stimulates adenylate cyclase to activate the cyclic AMP-dependent signaling pathway. This receptor is thought to regulate cholinergic neuronal transmission in the brain. Several antidepressants and antipsychotic drugs have a high affinity for this receptor. [provided by RefSeq, Aug 2013],function:This is one of the several different receptors for 5-hydroxytryptamine (serotonin), a biogenic hormone that functions as a neurotransmitter, a hormone, and a mitogen. The activity of this receptor is mediated by G proteins that stimulate adenylate cyclase. It has a high affinity for tricyclic psychotropic drugs.,similarity:Belongs to the G-protein coupled receptor 1 family.,tissue specificity:Expressed in several human brain regions, most prominently in the caudate nucleus.,

## Research Area

Calcium;Neuroactive ligand-receptor interaction;

## Image Data



Western Blot analysis of A549 cells using SR-6 Polyclonal Antibody

## Note

For research use only.