

---

## Summary

<b>Production Name</b>	SR-4 Rabbit Polyclonal Antibody
<b>Description</b>	Rabbit Polyclonal Antibody
<b>Host</b>	Rabbit
<b>Application</b>	IF, WB,
<b>Reactivity</b>	Human, Mouse, Rat

## Performance

<b>Conjugation</b>	Unconjugated
<b>Modification</b>	Unmodified
<b>Isotype</b>	IgG
<b>Clonality</b>	Polyclonal
<b>Form</b>	Liquid
<b>Storage</b>	Store at 4°C short term. Aliquot and store at -20°C long term. Avoid freeze/thaw cycles.
<b>Buffer</b>	Liquid in PBS containing 50% glycerol, 0.5% BSA and 0.02% New type preservative N.
<b>Purification</b>	Affinity purification

## Immunogen

<b>Gene Name</b>	HTR4
<b>Alternative Names</b>	HTR4; 5-hydroxytryptamine receptor 4; 5-HT-4; 5-HT4; Serotonin receptor 4
<b>Gene ID</b>	3360.0
<b>SwissProt ID</b>	Q13639. The antiserum was produced against synthesized peptide derived from human 5-HT-4. AA range: 21-70

## Application

<b>Dilution Ratio</b>	WB 1:500 - 1:2000. IF 1:200 - 1:1000. ELISA: 1:5000. Not yet tested in other applications.
<b>Molecular Weight</b>	43kD

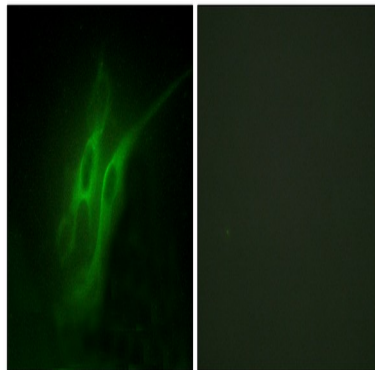
## Background

This gene is a member of the family of serotonin receptors, which are G protein coupled receptors that stimulate cAMP production in response to serotonin (5-hydroxytryptamine). The gene product is a glycosylated transmembrane protein that functions in both the peripheral and central nervous system to modulate the release of various neurotransmitters. Multiple transcript variants encoding proteins with distinct C-terminal sequences have been described. [provided by RefSeq, May 2010], alternative products: Additional isoforms seem to exist, function: This is one of the several different receptors for 5-hydroxytryptamine (serotonin), a biogenic hormone that functions as a neurotransmitter, a hormone, and a mitogen. The activity of this receptor is mediated by G proteins that stimulate adenylate cyclase., similarity: Belongs to the G-protein coupled receptor 1 family., subcellular location: Interaction with SNX27 mediates recruitment to early endosomes, while interaction with SLC9A3R1 and EZR might target the protein to specialized subcellular regions, such as microvilli., subunit: Isoform 5-HT4(A) interacts with MAGI2, MPP3, SLC9A3R1 and SNX27 isoforms 1 and 2. Isoform 5-HT4(E) interacts with INADL, NOS1 and SEC23A. Isoform 5-HT4(A) forms a complex including SLC9A3R1 and EZR., tissue specificity: Isoform 5-HT4(A) is expressed in ileum, brain, and atrium, but not in the ventricle.,

## Research Area

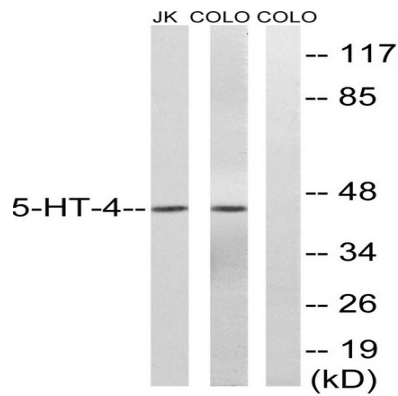
Calcium; Neuroactive ligand-receptor interaction;

## Image Data

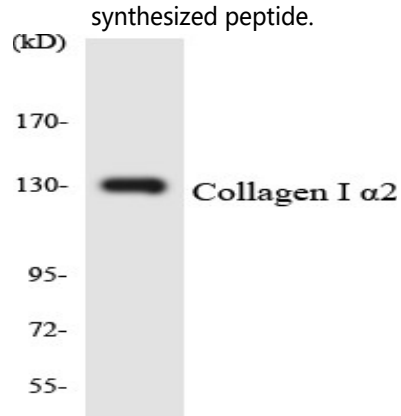


Immunofluorescence analysis of HeLa cells, using 5-HT-4 Antibody. The picture on the right is blocked with the synthesized peptide.

Product Name: SR-4 Rabbit Polyclonal Antibody  
Catalog #: APRab18252



Western blot analysis of lysates from Jurkat/COLO205, using 5-HT-4 Antibody. The lane on the right is blocked with the synthesized peptide.



Western blot analysis of the lysates from 293 cells using Collagen I  $\alpha$ 2 antibody.



Western Blot analysis of various cells using SR-4 Polyclonal Antibody

## Note

For research use only.