

Summary

Production Name	SR-2C Rabbit Polyclonal Antibody
Description	Rabbit Polyclonal Antibody
Host	Rabbit
Application	IF,IHC,WB,ELISA
Reactivity	Human,Mouse,Rat

Performance

Conjugation	Unconjugated
Modification	Unmodified
Isotype	IgG
Clonality	Polyclonal
Form	Liquid
Storage	Store at 4°C short term. Aliquot and store at -20°C long term. Avoid freeze/thaw cycles.
Buffer	Liquid in PBS containing 50% glycerol, 0.5% BSA and 0.02% New type preservative N.
Purification	Affinity purification

Immunogen

Gene Name	HTR2C
Alternative Names	HTR2C; HTR1C; 5-hydroxytryptamine receptor 2C; 5-HT-2C; 5-HT2C; 5-HTR2C; 5-hydroxytryptamine receptor 1C; 5-HT-1C; 5-HT1C; Serotonin receptor 2C
Gene ID	3358.0
SwissProt ID	P28335.The antiserum was produced against synthesized peptide derived from human 5-HT-2C. AA range:161-210

Application

Dilution Ratio	WB 1:500 - 1:2000. IHC 1:100 - 1:300. IF 1:200 - 1:1000. ELISA: 1:5000. Not yet tested in other applications.
Molecular Weight	55kD

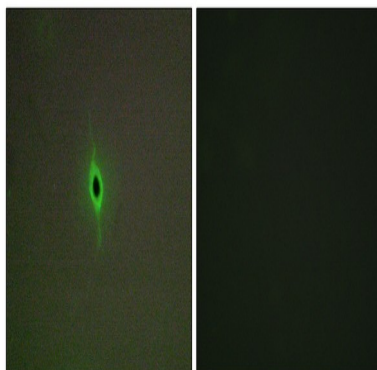
Background

This gene encodes a seven-transmembrane G-protein-coupled receptor. The encoded protein responds to signaling through the neurotransmitter serotonin. The mRNA of this gene is subject to multiple RNA editing events, where adenosine residues encoded by the genome are converted to inosines. RNA editing is predicted to alter the structure of the second intracellular loop, thereby generating alternate protein forms with decreased ability to interact with G proteins. Abnormalities in RNA editing of this gene have been detected in victims of suicide that suffer from depression. In addition, naturally-occurring variation in the promoter and 5' non-coding and coding regions of this gene may show statistically-significant association with mental illness and behavioral disorders. Alternative splicing results in multiple different transcript variants. [provided by RefSeq, Jan 2015],domain:The PDZ domain-binding motif is involved in the interaction with MPDZ.,function:This is one of the several different receptors for 5-hydroxytryptamine (serotonin), a biogenic hormone that functions as a neurotransmitter, a hormone, and a mitogen. This receptor mediates its action by association with G proteins that activate a phosphatidylinositol-calcium second messenger system.,polymorphism:Position 23 is polymorphic; the frequencies in unrelated Caucasians are 0.87 for Cys and 0.13 for Ser.,PTM:N-glycosylated.,RNA editing:Partially edited. RNA editing generates receptor isoforms that differ in their ability to interact with the phospholipase C signaling cascade in a transfected cell line, suggesting that this RNA processing event may contribute to the modulation of serotonergic neurotransmission in the central nervous system.,similarity:Belongs to the G-protein coupled receptor 1 family.,subunit:Interacts with MPDZ.,

Research Area

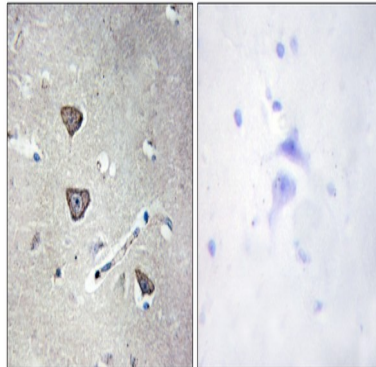
Calcium;Neuroactive ligand-receptor interaction;Gap junction;

Image Data

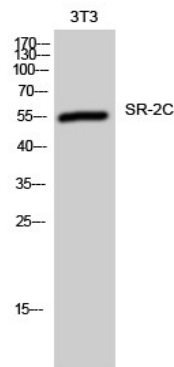


Immunofluorescence analysis of A549 cells, using 5-HT-2C Antibody. The picture on the right is blocked with the synthesized peptide.

Product Name: SR-2C Rabbit Polyclonal Antibody
Catalog #: APRab18249



Immunohistochemistry analysis of paraffin-embedded human brain tissue, using 5-HT-2C Antibody. The picture on the right is blocked with the synthesized peptide.



Western Blot analysis of 3T3 cells using SR-2C Polyclonal Antibody

Note

For research use only.