
Summary

Production Name	Spindlin-1 Rabbit Polyclonal Antibody
Description	Rabbit Polyclonal Antibody
Host	Rabbit
Application	WB,IHC,ELISA
Reactivity	Human,Mouse,Rat

Performance

Conjugation	Unconjugated
Modification	Unmodified
Isotype	IgG
Clonality	Polyclonal
Form	Liquid
Storage	Store at 4°C short term. Aliquot and store at -20°C long term. Avoid freeze/thaw cycles.
Buffer	Liquid in PBS containing 50% glycerol, 0.5% BSA and 0.02% New type preservative N.
Purification	Affinity purification

Immunogen

Gene Name	SPIN1
Alternative Names	SPIN1; OCR; SPIN; Spindlin-1; Ovarian cancer-related protein
Gene ID	10927.0
SwissProt ID	Q9Y657.The antiserum was produced against synthesized peptide derived from human SPIN1. AA range:111-160

Application

Dilution Ratio	WB 1:500 - 1:2000. IHC 1:100 - 1:300. ELISA: 1:20000. Not yet tested in other applications.
Molecular Weight	30kD

Product Name: Spindlin-1 Rabbit Polyclonal Antibody
Catalog #: APRab18194

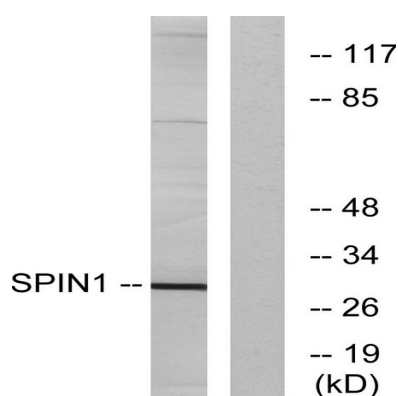


Background

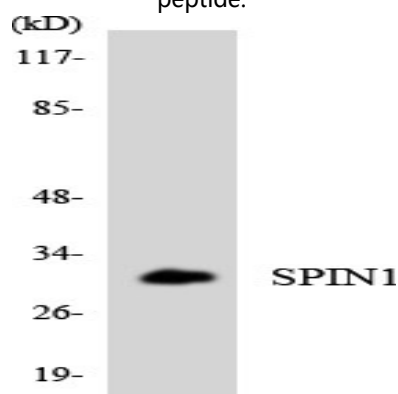
function:May play a role in cell-cycle regulation during the transition from gamete to embryo.,PTM:Phosphorylated during oocyte meiotic maturation.,sequence caution:Translated as Glu.,similarity:Belongs to the SPIN/STSY family.,function:May play a role in cell-cycle regulation during the transition from gamete to embryo.,PTM:Phosphorylated during oocyte meiotic maturation.,sequence caution:Translated as Glu.,similarity:Belongs to the SPIN/STSY family.,

Research Area

Image Data

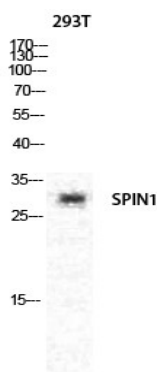


Western blot analysis of lysates from HeLa cells, using SPIN1 Antibody. The lane on the right is blocked with the synthesized peptide.



Western blot analysis of the lysates from K562 cells using SPIN1 antibody.

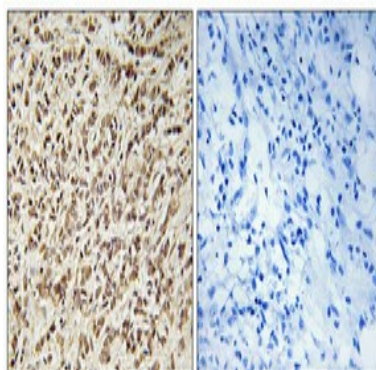
Product Name: Spindlin-1 Rabbit Polyclonal Antibody
Catalog #: APRab18194



Western Blot analysis of various cells using Spindlin-1 Polyclonal Antibody diluted at 1: 1000 cells nucleus extracted by Minute TM Cytoplasmic and Nuclear Fractionation kit (SC-003, Invent biotech, MN, USA) .



Western Blot analysis of HeLa cells using Spindlin-1 Polyclonal Antibody diluted at 1: 1000 cells nucleus extracted by Minute TM Cytoplasmic and Nuclear Fractionation kit (SC-003, Invent biotech, MN, USA) .



Immunohistochemical analysis of paraffin-embedded Human breast cancer. Antibody was diluted at 1:100 (4°, overnight) . High-pressure and temperature Tris-EDTA, pH 8.0 was used for antigen retrieval. Negative control (right) obtained from antibody was pre-absorbed by immunogen peptide.

Note

For research use only.