

---

## Summary

<b>Production Name</b>	SphK2 Rabbit Polyclonal Antibody
<b>Description</b>	Rabbit Polyclonal Antibody
<b>Host</b>	Rabbit
<b>Application</b>	IHC, WB,
<b>Reactivity</b>	Human, Mouse, Rat

## Performance

<b>Conjugation</b>	Unconjugated
<b>Modification</b>	Unmodified
<b>Isotype</b>	IgG
<b>Clonality</b>	Polyclonal
<b>Form</b>	Liquid
<b>Storage</b>	Store at 4°C short term. Aliquot and store at -20°C long term. Avoid freeze/thaw cycles.
<b>Buffer</b>	Liquid in PBS containing 50% glycerol, 0.5% BSA and 0.02% New type preservative N.
<b>Purification</b>	Affinity purification

## Immunogen

<b>Gene Name</b>	SPHK2
<b>Alternative Names</b>	SPHK2; Sphingosine kinase 2; SK 2; SPK 2
<b>Gene ID</b>	56848.0
<b>SwissProt ID</b>	Q9NRA0. The antiserum was produced against synthesized peptide derived from human SPHK2. AA range: 580-629

## Application

<b>Dilution Ratio</b>	WB 1:500 - 1:2000. IHC 1:100 - 1:300. ELISA: 1:5000..
<b>Molecular Weight</b>	70kD

## Background

---

**Product Name: SphK2 Rabbit Polyclonal Antibody**  
**Catalog #: APRab18188**

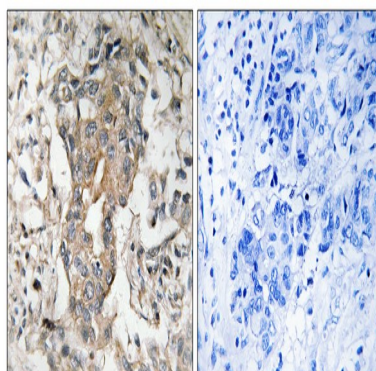


This gene encodes one of two sphingosine kinase isozymes that catalyze the phosphorylation of sphingosine into sphingosine 1-phosphate. Sphingosine 1-phosphate mediates many cellular processes including migration, proliferation and apoptosis, and also plays a role in several types of cancer by promoting angiogenesis and tumorigenesis. The encoded protein may play a role in breast cancer proliferation and chemoresistance. Alternatively spliced transcript variants encoding multiple isoforms have been observed for this gene. [provided by RefSeq, Aug 2011], alternative products: Experimental confirmation may be lacking for some isoforms, catalytic activity: ATP + sphinganine = ADP + sphinganine 1-phosphate., catalytic activity: ATP + sphingosine = ADP + sphingosine 1-phosphate., cofactor: Magnesium., function: Catalyzes the phosphorylation of sphingosine to form sphingosine 1-phosphate (SPP), a lipid mediator with both intra- and extracellular functions. Also acts on D-erythro-dihydrosphingosine, D-erythro-sphingosine and L-threo-dihydrosphingosine., similarity: Contains 1 DAGKc domain.,

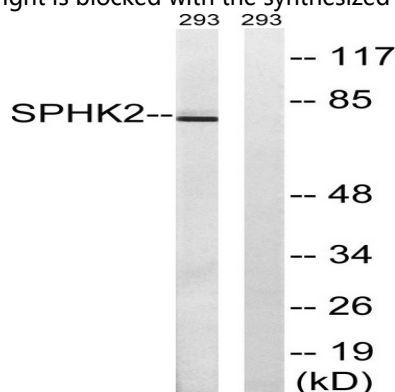
**Research Area**

Sphingolipid metabolism; Calcium; VEGF; Fc gamma R-mediated phagocytosis;

**Image Data**

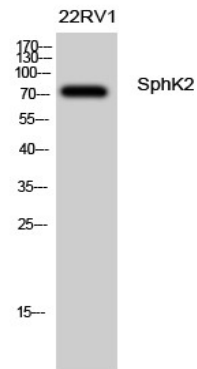


Immunohistochemistry analysis of paraffin-embedded human breast carcinoma tissue, using SPHK2 Antibody. The picture on the right is blocked with the synthesized peptide.

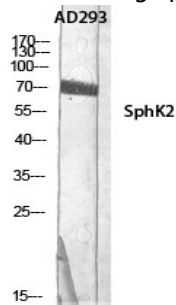


Western blot analysis of lysates from 293 cells, using SPHK2 Antibody. The lane on the right is blocked with the synthesized peptide.

**Product Name: SphK2 Rabbit Polyclonal Antibody**  
**Catalog #: APRab18188**



Western Blot analysis of 22RV1 cells using SphK2 Polyclonal Antibody diluted at 1: 500



Western Blot analysis of AD293 using SphK2 Polyclonal Antibody diluted at 1: 500

**Note**

For research use only.