

## Summary

<b>Production Name</b>	SP-A Rabbit Polyclonal Antibody
<b>Description</b>	Rabbit Polyclonal Antibody
<b>Host</b>	Rabbit
<b>Application</b>	WB,IHC,
<b>Reactivity</b>	Human,Mouse,Rat

## Performance

<b>Conjugation</b>	Unconjugated
<b>Modification</b>	Unmodified
<b>Isotype</b>	IgG
<b>Clonality</b>	Polyclonal
<b>Form</b>	Liquid
<b>Storage</b>	Store at 4°C short term. Aliquot and store at -20°C long term. Avoid freeze/thaw cycles.
<b>Buffer</b>	Liquid in PBS containing 50% glycerol, 0.5% BSA and 0.02% New type preservative N.
<b>Purification</b>	Affinity purification

## Immunogen

<b>Gene Name</b>	SFTPA2/SFTPA1 SFTPA2; COLEC5; PSAP; SFTP1; SFTPA; SFTPA2B; Pulmonary surfactant-associated protein A2; PSP-A; PSPA; SP-A; SP-A2; 35 kDa pulmonary surfactant-associated protein;
<b>Alternative Names</b>	Alveolar proteinosis protein; Collectin-5; SFTPA1; COLEC4; PSAP;SFTP1; SFTPA; SFTPA1B; Pulmonary surfactant-associated protein A1; PSP-A; PSPA; SP-A; SP-A1; 35 kDa pulmonary surfactant-associated protein; Alveolar proteinosis protein; Collectin-4
<b>Gene ID</b>	729238.0
<b>SwissProt ID</b>	Q8IWL1.The antiserum was produced against synthesized peptide derived from the Internal region of human SFTPA1/2. AA range:141-190

## Application

<b>Dilution Ratio</b>	WB 1:500 - 1:2000 IHC 1:100 - 1:300. ELISA: 1:20000..
-----------------------	---

**Product Name: SP-A Rabbit Polyclonal Antibody**  
**Catalog #: APRab18156**



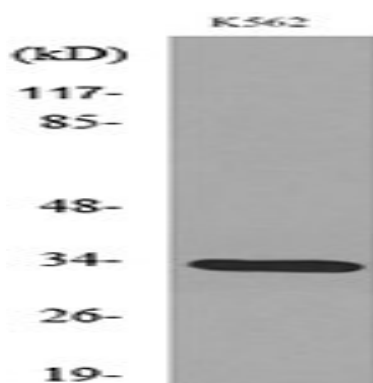
**Molecular Weight**                      34kD

## Background

This gene is one of several genes encoding pulmonary-surfactant associated proteins (SFTPA) located on chromosome 10. Mutations in this gene and a highly similar gene located nearby, which affect the highly conserved carbohydrate recognition domain, are associated with idiopathic pulmonary fibrosis. The current version of the assembly displays only a single centromeric SFTPA gene pair rather than the two gene pairs shown in the previous assembly which were thought to have resulted from a duplication. [provided by RefSeq, Sep 2009],function:In presence of calcium ions, it binds to surfactant phospholipids and contributes to lower the surface tension at the air-liquid interface in the alveoli of the mammalian lung and is essential for normal respiration.,miscellaneous:Pulmonary surfactant consists of 90% lipid and 10% protein. There are 4 surfactant-associated proteins: 2 collagenous, carbohydrate-binding glycoproteins (SP-A and SP-D) and 2 small hydrophobic proteins (SP-B and SP-C),polymorphism:At least 6 alleles of SFTPA2 are known: 1A, 1A(0), 1A(1), 1A(2), 1A(3) and 1A(4). The sequence shown is that of allele 1A(0),similarity:Belongs to the SFTPA family.,similarity:Contains 1 C-type lectin domain.,similarity:Contains 1 collagen-like domain.,subunit:Oligomeric complex of 6 set of homotrimers.,

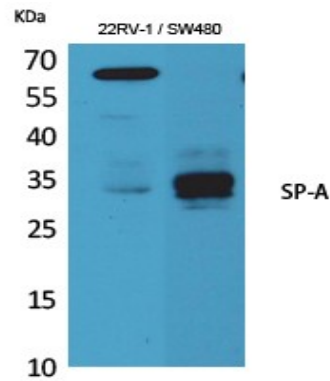
## Research Area

## Image Data

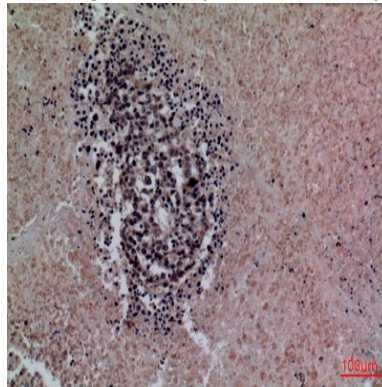


Western blot analysis of lysate from K562 cells, using SFTPA1/2 Antibody.

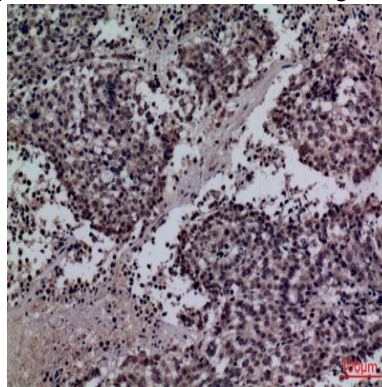
**Product Name: SP-A Rabbit Polyclonal Antibody**  
**Catalog #: APRab18156**



Western Blot analysis of K562, mouse lung cells using SP-A Polyclonal Antibody.. Secondary antibody was diluted at 1:20000



Immunohistochemical analysis of paraffin-embedded human-lung-cancer, antibody was diluted at 1:100



Immunohistochemical analysis of paraffin-embedded human-lung-cancer, antibody was diluted at 1:100

## **Note**

For research use only.