

Summary

Production Name	SOCS-2 Rabbit Polyclonal Antibody
Description	Rabbit Polyclonal Antibody
Host	Rabbit
Application	WB
Reactivity	Human,Mouse,Rat

Performance

Conjugation	Unconjugated
Modification	Unmodified
Isotype	IgG
Clonality	Polyclonal
Form	Liquid
Storage	Store at 4°C short term. Aliquot and store at -20°C long term. Avoid freeze/thaw cycles.
Buffer	Liquid in PBS containing 50% glycerol, 0.5% BSA and 0.02% New type preservative N.
Purification	Affinity purification

Immunogen

Gene Name	SOCS2
Alternative Names	SOCS2; CIS2; SSI2; STATI2; Suppressor of cytokine signaling 2; SOCS-2; Cytokine-inducible SH2 protein 2; CIS-2; STAT-induced STAT inhibitor 2; SSI-2
Gene ID	8835.0
SwissProt ID	O14508.The antiserum was produced against synthesized peptide derived from human SOCS-2. AA range:18-67

Application

Dilution Ratio	WB 1:500-2000
Molecular Weight	22kD

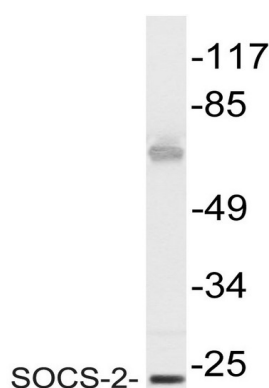
Background

This gene encodes a member of the suppressor of cytokine signaling (SOCS) family. SOCS family members are cytokine-inducible negative regulators of cytokine receptor signaling via the Janus kinase/signal transducer and activation of transcription pathway (the JAK/STAT pathway). SOCS family proteins interact with major molecules of signaling complexes to block further signal transduction, in part, by proteasomal depletion of receptors or signal-transducing proteins via ubiquitination. The expression of this gene can be induced by a subset of cytokines, including erythropoietin, GM-CSF, IL10, interferon (IFN)-gamma and by cytokine receptors such as growth hormone receptor. The protein encoded by this gene interacts with the cytoplasmic domain of insulin-like growth factor-1 receptor (IGF1R) and is thought to be involved in the regulation of IGF1R mediated cell signaling. This gene has domain: The SOCS box domain mediates the interaction with the Elongin BC complex, an adapter module in different E3 ubiquitin ligase complexes., function: SOCS family proteins form part of a classical negative feedback system that regulates cytokine signal transduction. SOCS2 appears to be a negative regulator in the growth hormone/IGF1 signaling pathway. Probable substrate recognition component of a SCF-like ECS (Elongin BC-CUL2/5-SOCS-box protein) E3 ubiquitin-protein ligase complex which mediates the ubiquitination and subsequent proteasomal degradation of target proteins., induction: By a subset of cytokines, including erythropoietin and granulocyte-macrophage colony stimulating factor (GM-CSF), pathway: Protein modification; protein ubiquitination., similarity: Contains 1 SH2 domain., similarity: Contains 1 SOCS box domain., subunit: Interacts with IGF1 receptor, prolactin receptor and growth hormone (GH) receptor. Associates with the Elongin BC complex., tissue specificity: High expression in heart, placenta, lung, kidney and prostate.,

Research Area

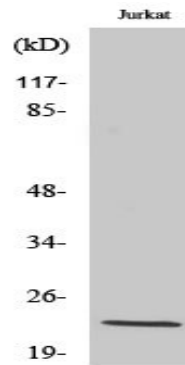
Jak_STAT; Insulin_Receptor; Type II diabetes mellitus;

Image Data



Western blot analysis of lysate from Jurkat cells, using SOCS-2 antibody.

Product Name: SOCS-2 Rabbit Polyclonal Antibody
Catalog #: APRab18091



Western Blot analysis of various cells using SOCS-2 Polyclonal Antibody diluted at 1: 1000

Note

For research use only.