

**Product Name: SNM1B Rabbit Polyclonal Antibody**  
**Catalog #: APRab18057**



## Summary

<b>Production Name</b>	SNM1B Rabbit Polyclonal Antibody
<b>Description</b>	Rabbit Polyclonal Antibody
<b>Host</b>	Rabbit
<b>Application</b>	WB
<b>Reactivity</b>	Human,Rat,Mouse

## Performance

<b>Conjugation</b>	Unconjugated
<b>Modification</b>	Unmodified
<b>Isotype</b>	IgG
<b>Clonality</b>	Polyclonal
<b>Form</b>	Liquid
<b>Storage</b>	Store at 4°C short term. Aliquot and store at -20°C long term. Avoid freeze/thaw cycles.
<b>Buffer</b>	Liquid in PBS containing 50% glycerol, 0.5% BSA and 0.02% New type preservative N.
<b>Purification</b>	Affinity purification

## Immunogen

<b>Gene Name</b>	DCLRE1B
<b>Alternative Names</b>	DCLRE1B; SNM1B; 5' exonuclease Apollo; DNA cross-link repair 1B protein; SNM1 homolog B; SNMIB; hSNM1B
<b>Gene ID</b>	64858.0
<b>SwissProt ID</b>	Q9H816.Synthesized peptide derived from the C-terminal region of human SNM1B.

## Application

<b>Dilution Ratio</b>	WB 1:500-2000; ELISA 2000-20000
<b>Molecular Weight</b>	60kD

## Background

DNA interstrand cross-links prevent strand separation, thereby physically blocking transcription, replication, and

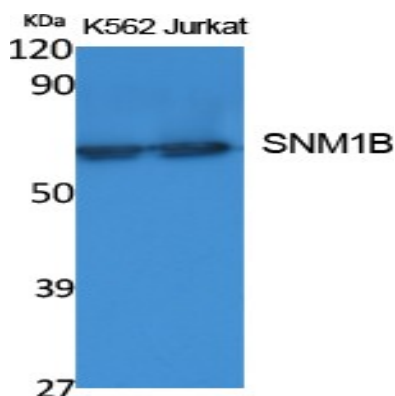
**Product Name: SNM1B Rabbit Polyclonal Antibody**  
**Catalog #: APRab18057**



segregation of DNA. DCLRE1B is one of several evolutionarily conserved genes involved in repair of interstrand cross-links (Dronkert et al., 2000 [PubMed 10848582]).[supplied by OMIM, Mar 2008],function:May be required for DNA interstrand cross-link repair.,PTM:Phosphorylated upon DNA damage, probably by ATM or ATR.,similarity:Belongs to the DNA repair metallo-beta-lactamase (DRMBL) family.,subcellular location:Localizes to discrete foci.,

## Research Area

## Image Data



Western Blot analysis of extracts from K562, Jurkat cells, using SNM1B Polyclonal Antibody.. Secondary antibody was diluted at 1:20000 cells nucleus extracted by Minute TM Cytoplasmic and Nuclear Fractionation kit (SC-003, Invent biotech, MN, USA) .

## Note

For research use only.