

Summary

Production Name	SNAPC 19 Rabbit Polyclonal Antibody
Description	Rabbit Polyclonal Antibody
Host	Rabbit
Application	IHC,ELISA
Reactivity	Human,Mouse

Performance

Conjugation	Unconjugated
Modification	Unmodified
Isotype	IgG
Clonality	Polyclonal
Form	Liquid
Storage	Store at 4°C short term. Aliquot and store at -20°C long term. Avoid freeze/thaw cycles.
Buffer	Liquid in PBS containing 50% glycerol, 0.5% BSA and 0.02% New type preservative N.
Purification	Affinity purification

Immunogen

Gene Name	SNAPC5 SNAPC5; SNAP19; snRNA-activating protein complex subunit 5; SNAPc subunit 5; Small
Alternative Names	nuclear RNA-activating complex polypeptide 5; snRNA-activating protein complex 19 kDa subunit; SNAPc 19 kDa subunit
Gene ID	10302.0
SwissProt ID	O75971.The antiserum was produced against synthesized peptide derived from human SNAPC5. AA range:10-59

Application

Dilution Ratio	IHC 1:100-1:300 ELISA: 1:10000
Molecular Weight	

Product Name: SNAPC 19 Rabbit Polyclonal Antibody
Catalog #: APRab18049

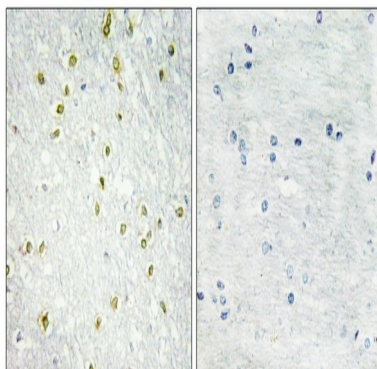


Background

This gene encodes a subunit of the small nuclear RNA (snRNA)-activating protein complex that plays a role in the transcription of snRNA genes. This complex binds to the promoters of snRNA genes transcribed by either RNA polymerase II or III and recruits other regulatory factors to activate snRNA gene transcription. The encoded protein may play a role in stabilizing this complex. A pseudogene of this gene has been identified on chromosome 6. [provided by RefSeq, Jul 2016],function:Part of the SNAPc complex required for the transcription of both RNA polymerase II and III small-nuclear RNA genes. Binds to the proximal sequence element (PSE), a non-TATA-box basal promoter element common to these 2 types of genes. Recruits TBP and BRF2 to the U6 snRNA TATA box.,subunit:Part of the SNAPc complex composed of 5 subunits: SNAPC1, SNAPC2, SNAPC3, SNAPC4 and SNAPC5. SNAPC5 interacts with SNAPC4.,

Research Area

Image Data



Immunohistochemistry analysis of paraffin-embedded human brain tissue, using SNAPC5 Antibody. The picture on the right is blocked with the synthesized peptide.

Note

For research use only.