
Summary

Production Name	SMIT Rabbit Polyclonal Antibody
Description	Rabbit Polyclonal Antibody
Host	Rabbit
Application	WB,ELISA
Reactivity	Human,Mouse,Rat

Performance

Conjugation	Unconjugated
Modification	Unmodified
Isotype	IgG
Clonality	Polyclonal
Form	Liquid
Storage	Store at 4°C short term. Aliquot and store at -20°C long term. Avoid freeze/thaw cycles.
Buffer	Liquid in PBS containing 50% glycerol, 0.5% BSA and 0.02% New type preservative N.
Purification	Affinity purification

Immunogen

Gene Name	SLC5A3
Alternative Names	SLC5A3; Sodium/myo-inositol cotransporter; Na(+)/myo-inositol cotransporter; Sodium/myo-inositol transporter 1; SMIT1; Solute carrier family 5 member 3
Gene ID	6526.0
SwissProt ID	P53794.The antiserum was produced against synthesized peptide derived from human SLC5A3. AA range:221-270

Application

Dilution Ratio	WB 1:500-2000; ELISA 2000-20000
Molecular Weight	80kD

Product Name: SMIT Rabbit Polyclonal Antibody
Catalog #: APRab18024

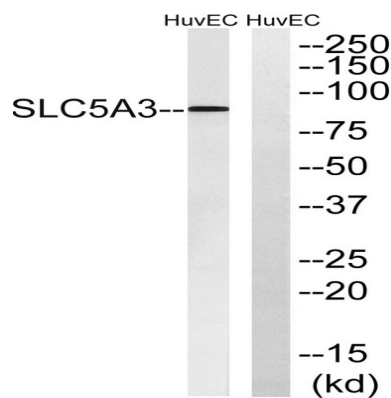


Background

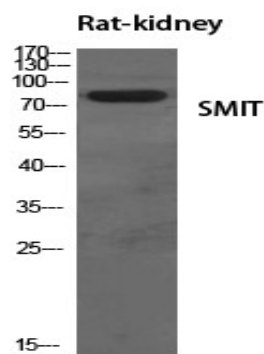
function:Prevents intracellular accumulation of high concentrations of myo-inositol (an osmolyte) that result in impairment of cellular function.,similarity:Belongs to the sodium:solute symporter (SSF) (TC 2.A.21) family.,function:Prevents intracellular accumulation of high concentrations of myo-inositol (an osmolyte) that result in impairment of cellular function.,similarity:Belongs to the sodium:solute symporter (SSF) (TC 2.A.21) family.,

Research Area

Image Data

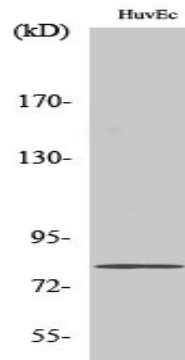


Western blot analysis of lysates from HUVEC cells, using SLC5A3 Antibody. The lane on the right is blocked with the synthesized peptide.



Western Blot analysis of various cells using SMIT Polyclonal Antibody diluted at 1 : 500

Product Name: SMIT Rabbit Polyclonal Antibody
Catalog #: APRab18024



Western Blot analysis of HuvEc cells using SMIT Polyclonal Antibody diluted at 1: 500

Note

For research use only.