

Summary

Production Name	Smad6 Rabbit Polyclonal Antibody
Description	Rabbit Polyclonal Antibody
Host	Rabbit
Application	WB,IHC,ELISA
Reactivity	Human,Mouse

Performance

Conjugation	Unconjugated
Modification	Unmodified
Isotype	IgG
Clonality	Polyclonal
Form	Liquid
Storage	Store at 4°C short term. Aliquot and store at -20°C long term. Avoid freeze/thaw cycles.
Buffer	Liquid in PBS containing 50% glycerol, 0.5% BSA and 0.02% New type preservative N.
Purification	Affinity purification

Immunogen

Gene Name	SMAD6
Alternative Names	SMAD6; MADH6; Mothers against decapentaplegic homolog 6; MAD homolog 6; Mothers against DPP homolog 6; SMAD family member 6; SMAD 6; Smad6; hSMAD6
Gene ID	4091.0
SwissProt ID	O43541.The antiserum was produced against synthesized peptide derived from human Smad6. AA range:323-372

Application

Dilution Ratio	WB 1:500 - 1:2000. IHC 1:100 - 1:300. ELISA: 1:40000..
Molecular Weight	62kD

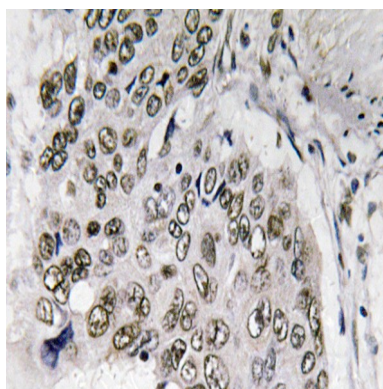
Background

The protein encoded by this gene belongs to the SMAD family of proteins, which are related to *Drosophila* Mothers against decapentaplegic (Mad) and *C. elegans* Sma. SMAD proteins are signal transducers and transcriptional modulators that mediate multiple signaling pathways. This protein functions in the negative regulation of BMP and TGF-beta/activin-signalling. Multiple transcript variants have been found for this gene.[provided by RefSeq, Sep 2014],function:Antagonist of signaling by TGF-beta (transforming growth factor) type 1 receptor superfamily members; has been shown to inhibit selectively BMP (bone morphogenetic proteins) signaling by competing with the co-SMAD SMAD4 for receptor-activated SMAD1. SMAD6 is an inhibitory SMAD (I-SMAD) or antagonistic SMAD. Binds to regulatory elements in target promoter regions.,PTM:Phosphorylated by BMP type 1 receptor kinase and by PRKX.,similarity:Belongs to the dwarfin/SMAD family.,similarity:Contains 1 MH1 (MAD homology 1) domain.,similarity:Contains 1 MH2 (MAD homology 2) domain.,subunit:Interacts with NEDD4L (By similarity). Interacts with RNF111 and AXIN1. Interacts with TGF-beta type I receptor superfamily members, SMAD1, HOXC8 and HOXC9. Interacts with STAMBP and PRKX.,tissue specificity:Ubiquitous in various organs, with higher levels in lung. Isoform B is up-regulated in diseased heart tissue.,

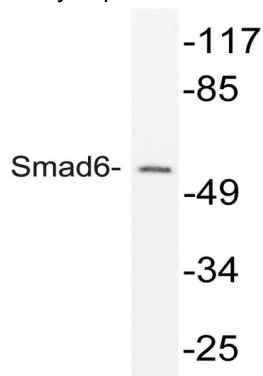
Research Area

TGF-beta;

Image Data



Immunohistochemistry analysis of Smad6 antibody in paraffin-embedded human lung carcinoma tissue.



Product Name: Smad6 Rabbit Polyclonal Antibody
Catalog #: APRab18000



Western blot analysis of lysate from mouse brain, using Smad6 antibody.

Note

For research use only.