
Summary

Production Name	Smad5 Rabbit Polyclonal Antibody
Description	Rabbit Polyclonal Antibody
Host	Rabbit
Application	WB,IHC,ELISA
Reactivity	Human,Rat

Performance

Conjugation	Unconjugated
Modification	Unmodified
Isotype	IgG
Clonality	Polyclonal
Form	Liquid
Storage	Store at 4°C short term. Aliquot and store at -20°C long term. Avoid freeze/thaw cycles.
Buffer	Liquid in PBS containing 50% glycerol, 0.5% BSA and 0.02% New type preservative N.
Purification	Affinity purification

Immunogen

Gene Name	SMAD5 SMAD5; MADH5; Mothers against decapentaplegic homolog 5; MAD homolog 5;
Alternative Names	Mothers against DPP homolog 5; JV5-1; SMAD family member 5; SMAD 5; Smad5; hSmad5
Gene ID	4090.0
SwissProt ID	Q99717.Synthesized peptide derived from the Internal region of human Smad5.

Application

Dilution Ratio	WB 1:500 - 1:2000. IHC-p: 1:100-300 ELISA: 1:40000..
Molecular Weight	52kD

Product Name: Smad5 Rabbit Polyclonal Antibody
Catalog #: APRab17999



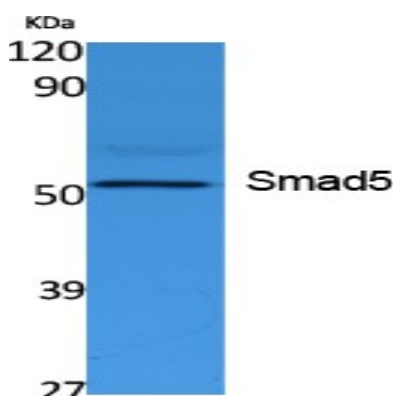
Background

The protein encoded by this gene is involved in the transforming growth factor beta signaling pathway that results in an inhibition of the proliferation of hematopoietic progenitor cells. The encoded protein is activated by bone morphogenetic proteins type 1 receptor kinase, and may be involved in cancer. Alternative splicing results in multiple transcript variants. [provided by RefSeq, Feb 2014],function:Transcriptional modulator activated by BMP (bone morphogenetic proteins) type 1 receptor kinase. SMAD5 is a receptor-regulated SMAD (R-SMAD),.PTM:Phosphorylated on serine by BMP (bone morphogenetic proteins) type 1 receptor kinase,.PTM:Ubiquitin-mediated proteolysis by SMAD-specific E3 ubiquitin ligase SMURF1,.similarity:Belongs to the dwarfin/SMAD family,.similarity:Contains 1 MH1 (MAD homology 1) domain,.similarity:Contains 1 MH2 (MAD homology 2) domain,.subcellular location:Cytoplasmic in the absence of ligand. Migrates to the nucleus when complexed with SMAD4,.subunit:May form trimers with the co-SMAD SMAD4. Interacts with PEBP2-alpha subunit and SMURF1. Interacts with SUV39H1 and SUV39H2,.tissue specificity:Ubiquitous.,

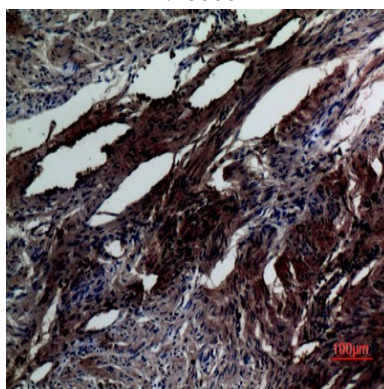
Research Area

TGF-beta;

Image Data



Western Blot analysis of extracts from K562 cells, using Smad5 Polyclonal Antibody.. Secondary antibody was diluted at 1:20000



Immunohistochemical analysis of paraffin-embedded human-uterus, antibody was diluted at 1:100

Product Name: Smad5 Rabbit Polyclonal Antibody
Catalog #: APRab17999



Note

For research use only.