

**Product Name: SLK Rabbit Polyclonal Antibody**  
**Catalog #: APRab17975**



## Summary

<b>Production Name</b>	SLK Rabbit Polyclonal Antibody
<b>Description</b>	Rabbit Polyclonal Antibody
<b>Host</b>	Rabbit
<b>Application</b>	IF,IHC,WB,
<b>Reactivity</b>	Human,Mouse,Rat

## Performance

<b>Conjugation</b>	Unconjugated
<b>Modification</b>	Unmodified
<b>Isotype</b>	IgG
<b>Clonality</b>	Polyclonal
<b>Form</b>	Liquid
<b>Storage</b>	Store at 4°C short term. Aliquot and store at -20°C long term. Avoid freeze/thaw cycles.
<b>Buffer</b>	Liquid in PBS containing 50% glycerol, 0.5% BSA and 0.02% New type preservative N.
<b>Purification</b>	Affinity purification

## Immunogen

<b>Gene Name</b>	SLK SLK; KIAA0204; STK2; STE20-like serine/threonine-protein kinase; STE20-like kinase;
<b>Alternative Names</b>	hSLK; CTCL tumor antigen se20-9; STE20-related serine/threonine-protein kinase; STE20-related kinase; Serine/threonine-protein kinase 2
<b>Gene ID</b>	9748.0
<b>SwissProt ID</b>	Q9H2G2.The antiserum was produced against synthesized peptide derived from human SLK. AA range:1151-1200

## Application

<b>Dilution Ratio</b>	WB 1:500 - 1:2000 IHC 1:100 - 1:300. IF 1:200 - 1:1000. ELISA: 1:5000. Not yet tested in other applications.
-----------------------	--

**Product Name: SLK Rabbit Polyclonal Antibody**  
**Catalog #: APRab17975**



---

**Molecular Weight**                      150kD

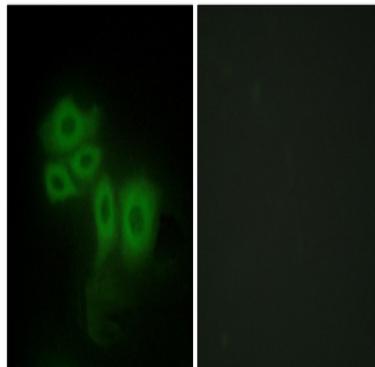
## Background

catalytic activity:ATP + a protein = ADP + a phosphoprotein.,function:Mediates apoptosis and actin stress fiber dissolution.,PTM:Autophosphorylated. Phosphorylated upon DNA damage, probably by ATM or ATR.,PTM:Proteolytically cleaved by caspase-3.,sequence caution:Contaminating sequence. Potential poly-A sequence starting in position 422.,sequence caution:Contaminating sequence. Potential poly-A sequence starting in position 611.,sequence caution:Contaminating sequence. Potential poly-A sequence starting in position 614.,similarity:Belongs to the protein kinase superfamily. STE Ser/Thr protein kinase family. STE20 subfamily.,similarity:Contains 1 protein kinase domain.,similarity:Contains 1 UVR domain.,tissue specificity:Ubiquitously expressed. Highest expression is found in heart and in skeletal muscle.,catalytic activity:ATP + a protein = ADP + a phosphoprotein.,function:Mediates apoptosis and actin stress fiber dissolution.,PTM:Autophosphorylated. Phosphorylated upon DNA damage, probably by ATM or ATR.,PTM:Proteolytically cleaved by caspase-3.,sequence caution:Contaminating sequence. Potential poly-A sequence starting in position 422.,sequence caution:Contaminating sequence. Potential poly-A sequence starting in position 611.,sequence caution:Contaminating sequence. Potential poly-A sequence starting in position 614.,similarity:Belongs to the protein kinase superfamily. STE Ser/Thr protein kinase family. STE20 subfamily.,similarity:Contains 1 protein kinase domain.,similarity:Contains 1 UVR domain.,tissue specificity:Ubiquitously expressed. Highest expression is found in heart and in skeletal muscle.,

## Research Area

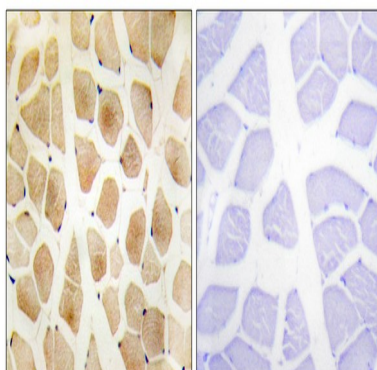
Oocyte meiosis;

## Image Data

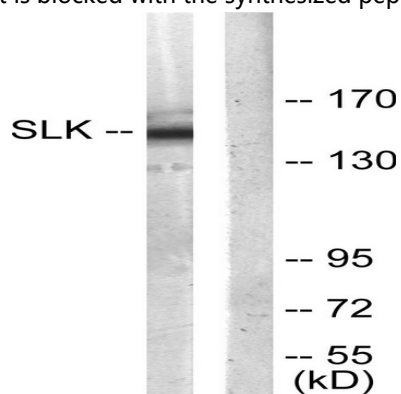


Immunofluorescence analysis of HepG2 cells, using SLK Antibody. The picture on the right is blocked with the synthesized peptide.

**Product Name: SLK Rabbit Polyclonal Antibody**  
**Catalog #: APRab17975**



Immunohistochemistry analysis of paraffin-embedded human skeletal muscle tissue, using SLK Antibody. The picture on the right is blocked with the synthesized peptide.



Western blot analysis of lysates from COLO205 cells, using SLK Antibody. The lane on the right is blocked with the synthesized peptide.



Western Blot analysis of various cells using SLK Polyclonal Antibody diluted at 1: 1000

## Note

For research use only.