

Product Name: SLC10A4 Rabbit Polyclonal Antibody
Catalog #: APRab17950



Summary

Production Name	SLC10A4 Rabbit Polyclonal Antibody
Description	Rabbit Polyclonal Antibody
Host	Rabbit
Application	IHC,ELISA
Reactivity	Human,Rat,Mouse

Performance

Conjugation	Unconjugated
Modification	Unmodified
Isotype	IgG
Clonality	Polyclonal
Form	Liquid
Storage	Store at 4°C short term. Aliquot and store at -20°C long term. Avoid freeze/thaw cycles.
Buffer	Liquid in PBS containing 50% glycerol, 0.5% BSA and 0.02% New type preservative N.
Purification	Affinity purification

Immunogen

Gene Name	SLC10A4
Alternative Names	SLC10A4; Sodium/bile acid cotransporter 4; Na(+)/bile acid cotransporter 4; Solute carrier family 10 member 4
Gene ID	201780.0
SwissProt ID	Q96EP9.Synthesized peptide derived from SLC10A4 . at AA range: 340-420

Application

Dilution Ratio	IHC 1:100-1:300 ELISA: 1:10000
Molecular Weight	

Background

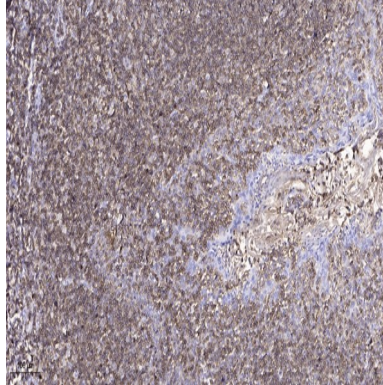
similarity:Belongs to the sodium:bile acid symporter family.,similarity:Belongs to the sodium:bile acid symporter family.,

Product Name: SLC10A4 Rabbit Polyclonal Antibody
Catalog #: APRab17950



Research Area

Image Data



Immunohistochemical analysis of paraffin-embedded human tonsil. 1, Antibody was diluted at 1:200 (4° overnight) . 2, Tris-EDTA,pH9.0 was used for antigen retrieval. 3,Secondary antibody was diluted at 1:200 (room temperature, 45min) .

Note

For research use only.