
Summary

Production Name	Siglec-5/14 Rabbit Polyclonal Antibody
Description	Rabbit Polyclonal Antibody
Host	Rabbit
Application	WB,IHC,ELISA
Reactivity	Human,Rat,Mouse

Performance

Conjugation	Unconjugated
Modification	Unmodified
Isotype	IgG
Clonality	Polyclonal
Form	Liquid
Storage	Store at 4°C short term. Aliquot and store at -20°C long term. Avoid freeze/thaw cycles.
Buffer	Liquid in PBS containing 50% glycerol, 0.5% BSA and 0.02% New type preservative N.
Purification	Affinity purification

Immunogen

Gene Name	SIGLEC5/SIGLEC14
Alternative Names	SIGLEC5; CD33L2; OBBP2; Sialic acid-binding Ig-like lectin 5; Siglec-5; CD33 antigen-like 2; Obesity-binding protein 2; OB-BP2; OB-binding protein 2; CD170; SIGLEC14; Sialic acid-binding Ig-like lectin 14; Siglec-14
Gene ID	8778.0
SwissProt ID	O15389.Synthesized peptide derived from Sialic acid-binding Ig-like lectin 5/Sialic acid-binding Ig-like lectin 14 at AA range: 91-140

Application

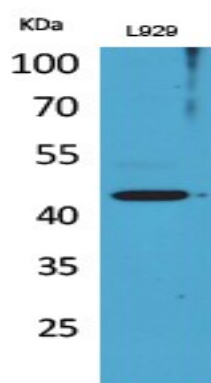
Dilution Ratio	WB 1:500 - 1:2000. IHC-p: 1:100-300 ELISA: 1:20000..
Molecular Weight	60kD

Background

This gene encodes a member of the sialic acid-binding immunoglobulin-like lectin (Siglec) family. These cell surface lectins are characterized by structural motifs in the immunoglobulin (Ig)-like domains and sialic acid recognition sites in the first Ig V set domain. The encoded protein is a member of the CD33-related subset of Siglecs and inhibits the activation of several cell types including monocytes, macrophages and neutrophils. Binding of group B Streptococcus (GBS) to the encoded protein plays a role in GBS immune evasion. [provided by RefSeq, Feb 2012],domain:Contains 1 copy of a cytoplasmic motif that is referred to as the immunoreceptor tyrosine-based inhibitor motif (ITIM). This motif is involved in modulation of cellular responses. The phosphorylated ITIM motif can bind the SH2 domain of several SH2-containing phosphatases.,function:Putative adhesion molecule that mediates sialic-acid dependent binding to cells. Binds equally to alpha-2,3-linked and alpha-2,6-linked sialic acid. The sialic acid recognition site may be masked by cis interactions with sialic acids on the same cell surface.,online information:Siglec-5,similarity:Belongs to the immunoglobulin superfamily. SIGLEC (sialic acid binding Ig-like lectin) family.,similarity:Contains 1 Ig-like V-type (immunoglobulin-like) domain.,similarity:Contains 2 Ig-like C2-type (immunoglobulin-like) domains.,tissue specificity:Expressed by monocytic/myeloid lineage cells. Found at high levels in peripheral blood leukocytes, spleen, bone marrow and at lower levels in lymph node, lung, appendix, placenta, pancreas and thymus. Expressed by monocytes and neutrophils but absent from leukemic cell lines representing early stages of myelomonocytic differentiation.,

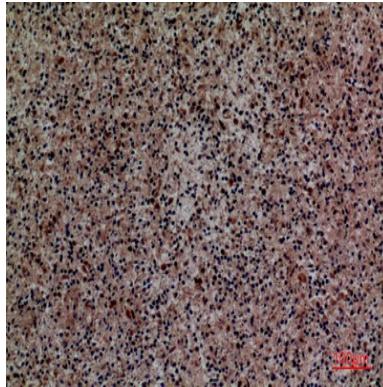
Research Area

Image Data

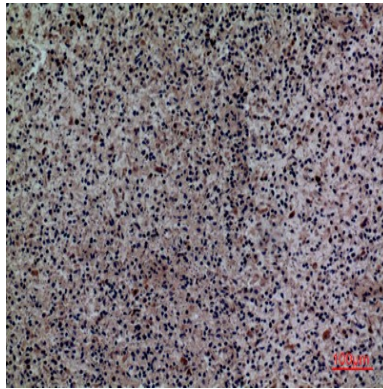


Western Blot analysis of L929 cells using Siglec-5/14 Polyclonal Antibody. Antibody was diluted at 1:1000. Secondary antibody was diluted at 1:20000

Product Name: Siglec-5/14 Rabbit Polyclonal Antibody
Catalog #: APRab17897



Immunohistochemical analysis of paraffin-embedded human-spleen, antibody was diluted at 1:100



Immunohistochemical analysis of paraffin-embedded human-spleen, antibody was diluted at 1:100

Note

For research use only.