

Summary

Production Name	SH3BGR Rabbit Polyclonal Antibody
Description	Rabbit Polyclonal Antibody
Host	Rabbit
Application	WB
Reactivity	Human,Mouse,Rat

Performance

Conjugation	Unconjugated
Modification	Unmodified
Isotype	IgG
Clonality	Polyclonal
Form	Liquid
Storage	Store at 4°C short term. Aliquot and store at -20°C long term. Avoid freeze/thaw cycles.
Buffer	Liquid in PBS containing 50% glycerol, 0.5% BSA and 0.02% New type preservative N.
Purification	Affinity purification

Immunogen

Gene Name	SH3BGR
Alternative Names	SH3BGR; SH3 domain-binding glutamic acid-rich protein; SH3BGR protein; 21-glutamic acid-rich protein; 21-GARP
Gene ID	6450.0
SwissProt ID	P55822.The antiserum was produced against synthesized peptide derived from human SH3BGR. AA range:81-130

Application

Dilution Ratio	WB 1:500-2000
Molecular Weight	26kD

Background

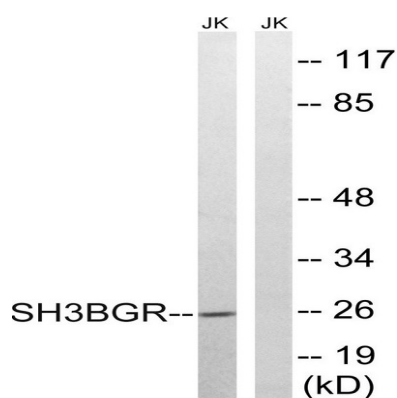
Product Name: SH3BGR Rabbit Polyclonal Antibody
Catalog #: APRab17839



caution:It is uncertain whether Met-1 or Met-64 is the initiator.,similarity:Belongs to the SH3BGR family.,tissue specificity:Expressed in heart and skeletal muscle.,caution:It is uncertain whether Met-1 or Met-64 is the initiator.,similarity:Belongs to the SH3BGR family.,tissue specificity:Expressed in heart and skeletal muscle.,

Research Area

Image Data



Western blot analysis of lysates from Jurkat cells, using SH3BGR Antibody. The lane on the right is blocked with the synthesized peptide.

Note

For research use only.