

Summary

Production Name	Sgo2 Rabbit Polyclonal Antibody
Description	Rabbit Polyclonal Antibody
Host	Rabbit
Application	IHC,ELISA
Reactivity	Human,Rat,Mouse

Performance

Conjugation	Unconjugated
Modification	Unmodified
Isotype	IgG
Clonality	Polyclonal
Form	Liquid
Storage	Store at 4°C short term. Aliquot and store at -20°C long term. Avoid freeze/thaw cycles.
Buffer	Liquid in PBS containing 50% glycerol, 0.5% BSA and 0.02% New type preservative N.
Purification	Affinity purification

Immunogen

Gene Name	SGOL2
Alternative Names	SGOL2; Shugoshin-like 2; Shugoshin-2; Sgo2; Tripin
Gene ID	151246.0
SwissProt ID	Q562F6.The antiserum was produced against synthesized peptide derived from human SGOL2. AA range:681-730

Application

Dilution Ratio	IHC 1:100-1:300 ELISA: 1:10000
Molecular Weight	

Background

function:During meiosis, protects centromeric cohesion complexes until metaphase II/anaphase II transition, preventing

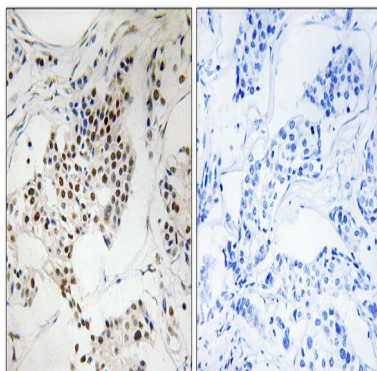
Product Name: Sgo2 Rabbit Polyclonal Antibody
Catalog #: APRab17828



premature release of meiosis-specific REC8 cohesin complexes from anaphase I centromeres. Is thus essential for an accurate gametogenesis (By similarity). May act by targeting PPP2CA to centromeres, thus leading to cohesin dephosphorylation.,PTM:Phosphorylated upon DNA damage, probably by ATM or ATR.,sequence caution:Contaminating sequence. Potential poly-A sequence.,similarity:Belongs to the shugoshin family.,subcellular location:In HeLa cells, localizes at centromeres throughout prophase until metaphase and disappears at anaphase.,subunit:Directly interacts with PPP2CA.,function:During meiosis, protects centromeric cohesion complexes until metaphase II/anaphase II transition, preventing premature release of meiosis-specific REC8 cohesin complexes from anaphase I centromeres. Is thus essential for an accurate gametogenesis (By similarity). May act by targeting PPP2CA to centromeres, thus leading to cohesin dephosphorylation.,PTM:Phosphorylated upon DNA damage, probably by ATM or ATR.,sequence caution:Contaminating sequence. Potential poly-A sequence.,similarity:Belongs to the shugoshin family.,subcellular location:In HeLa cells, localizes at centromeres throughout prophase until metaphase and disappears at anaphase.,subunit:Directly interacts with PPP2CA.,

Research Area

Image Data



Immunohistochemistry analysis of paraffin-embedded human breast carcinoma, using SGOL2 Antibody. The picture on the right is blocked with the synthesized peptide.

Note

For research use only.